



## Connecting Zebra Printers to Windows XP via USB

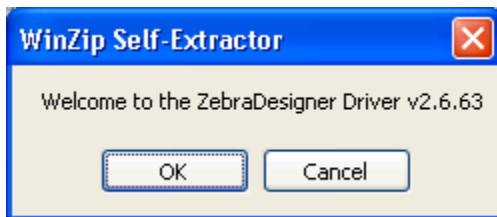
The following instructions are for all DPAS supported Zebra printers except the Zebra GK420t.

The ZDesigner R110Xi4 203 dpi driver has been tested and recommended for DPAS use. This driver will support all Zebra printers approved by DPAS except the Zebra GK420t.

Please visit the **Support > Software and Hardware** section of the [DPAS Support Web Site](#) for a listing of approved DPAS printers.

## Downloading Driver Files

1. In your browser, navigate to <http://tinyurl.com/ks4yxh6>
2. Select the **ACCEPT AND BEGIN DOWNLOAD NOW** button.
3. Choose **Save**.
4. Save the file to your **Desktop** and do not change the file name.
5. Once the download is complete, navigate to the file on your desktop and open the file.
6. If you receive a security warning, click **Run**.
7. Select **OK**.



8. The file saved as a ZIP file. When you double-click it, Windows will prompt you to unzip the file. Please make sure it has **C:\ZD2663** as the Unzip to Folder.
9. Ensure the check for **When done unzipping open: PrnInst.exe** is selected.

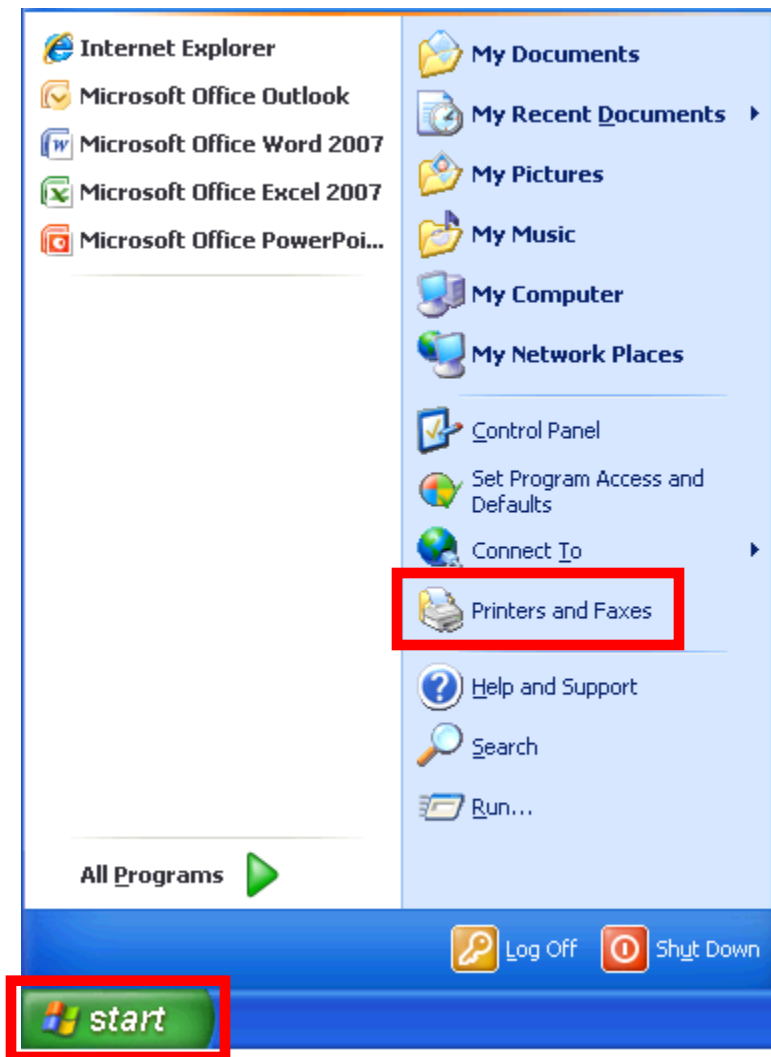


10. Choose the **Unzip** button.

11. Select the **OK** button once all files are unzipped successfully.

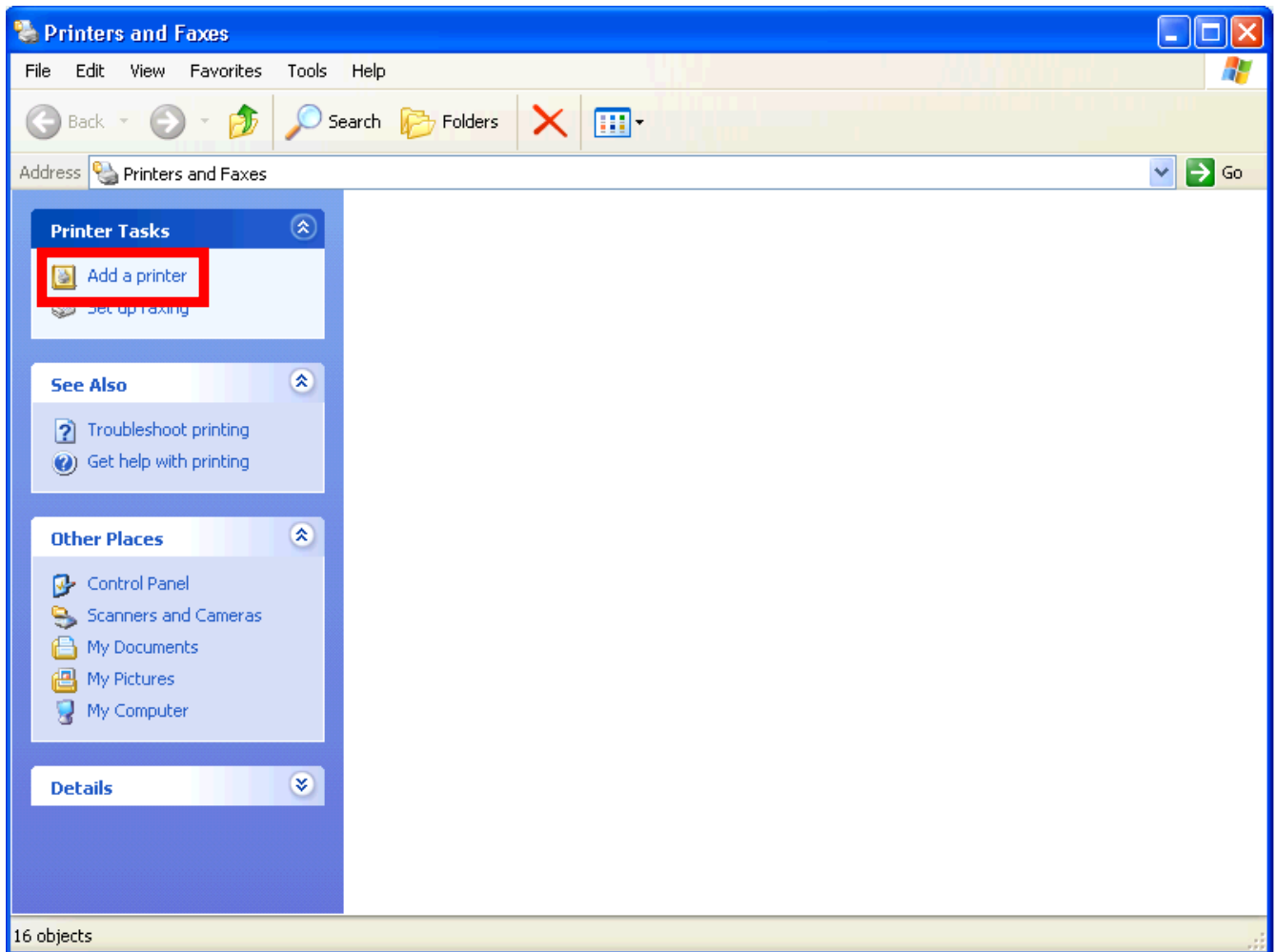
## Installing the ZDesigner Print Driver

1. Select **Start > Printers and Faxes**.



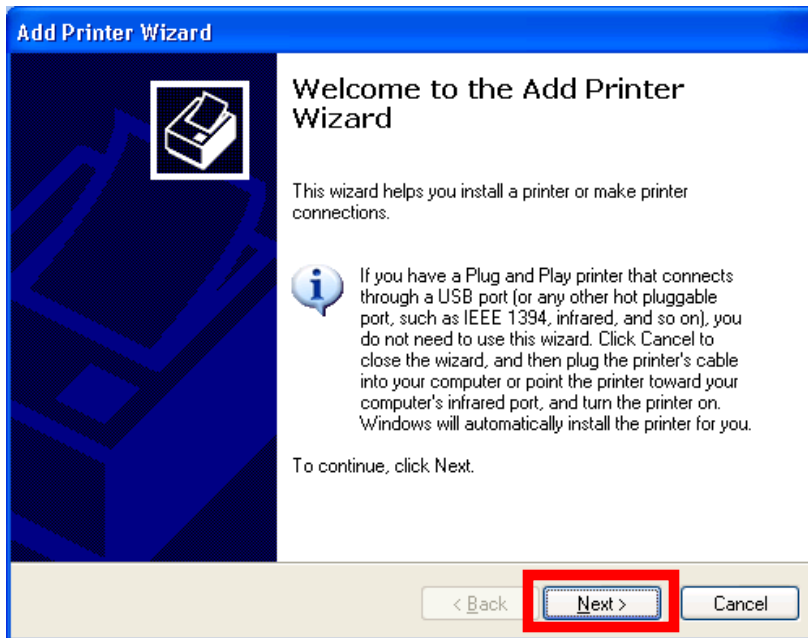


2. Choose the **Add a Printer** option.



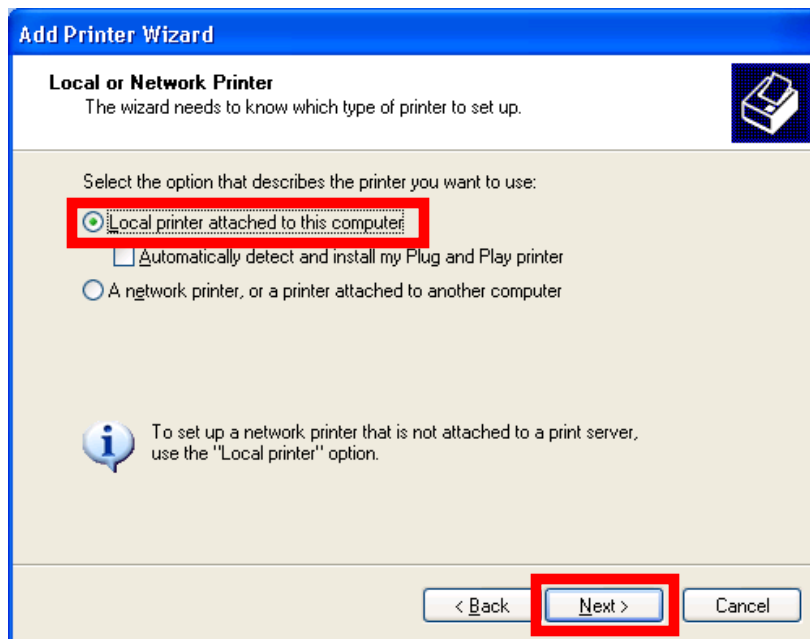


3. The **Add Printer Wizard** displays. Select the **Next** button.



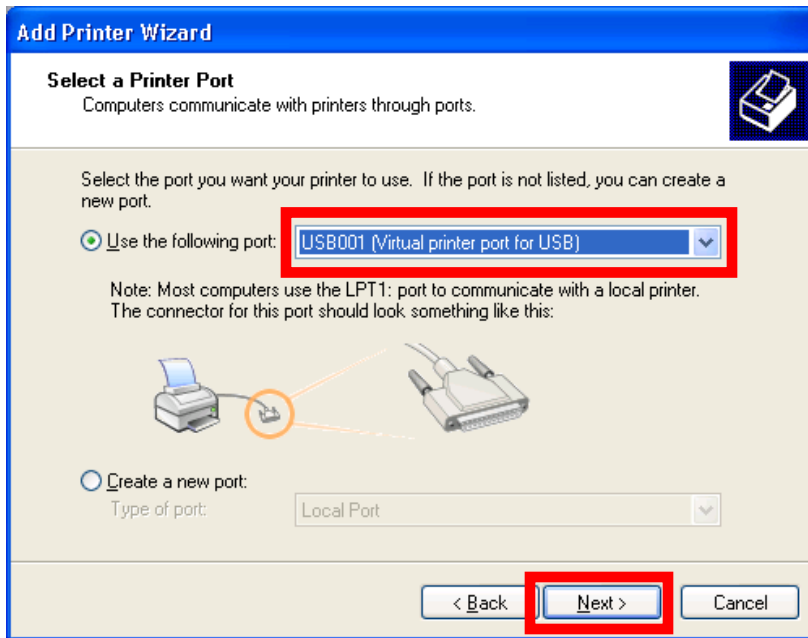


4. Select the **Local printer attached to this computer** radio button.
5. Verify the **Automatically detect and install my Plug and Play printer** checkbox is unchecked.
6. Select the **Next** button.

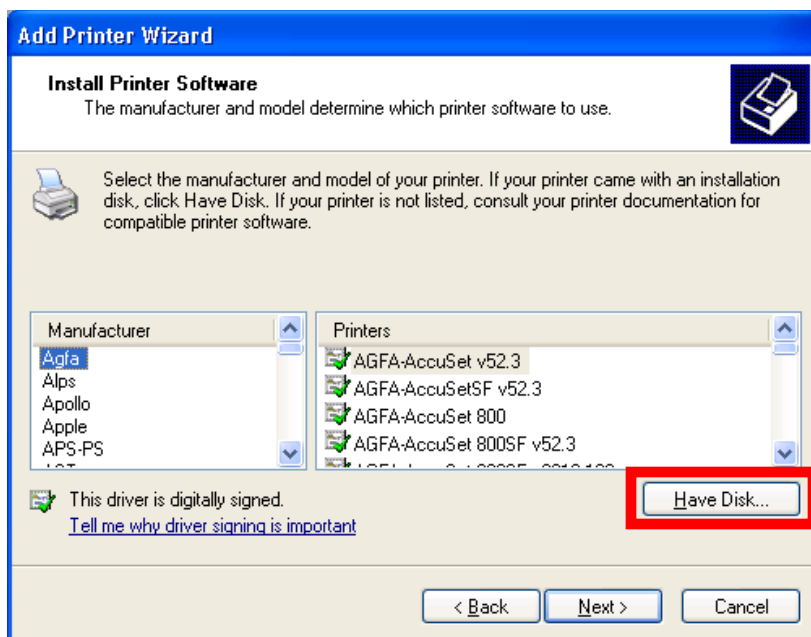




7. Select the USB port for your printer from the **Use the following port** drop-down list.

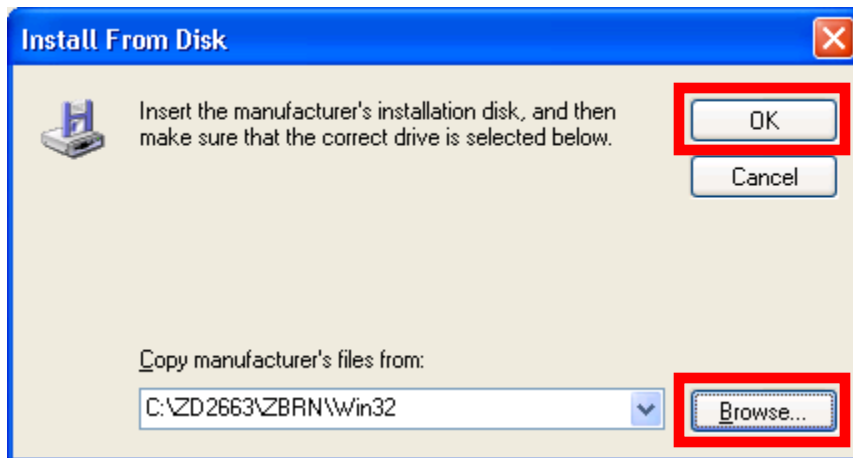


8. Select the **Have Disk...** button.

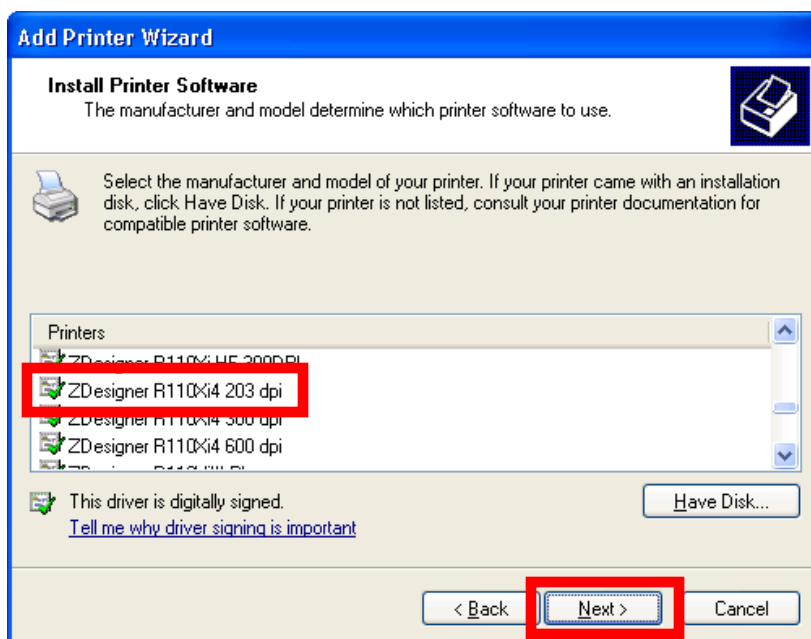




9. Use the **Browse** button to navigate to C:\ZD2663\ZBRN\ and select the Win32 folder if you are using a 32-bit operating system or the Win64 folder if you are using a 64-bit operating system.
10. Select the **OK** button.

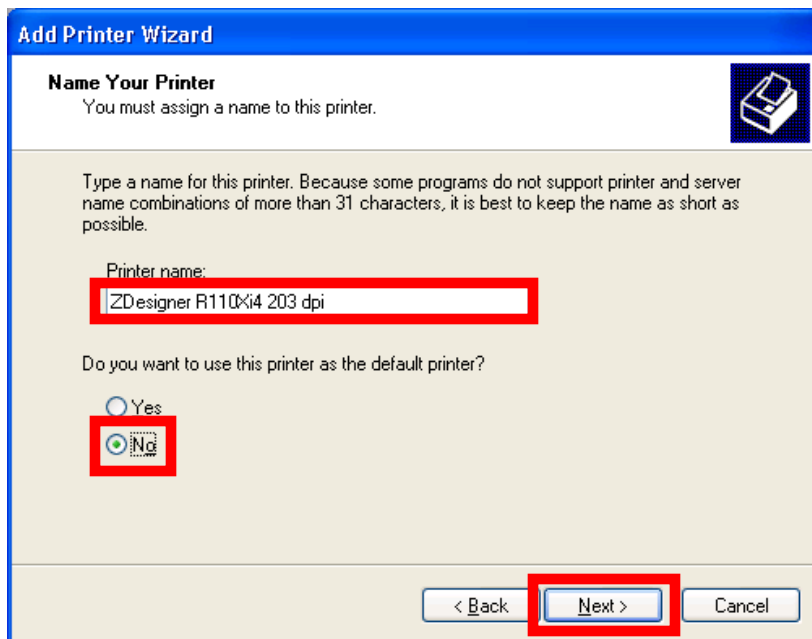


11. Select **ZDesigner R110Xi4 203 dpi** from the **Printers** list.
12. Select the **Next** button.





13. Enter a meaningful name in the **Printer name** field.
14. Select **No** if you do not want the label printer to be the computers default printer.
15. Select the **Next** button.

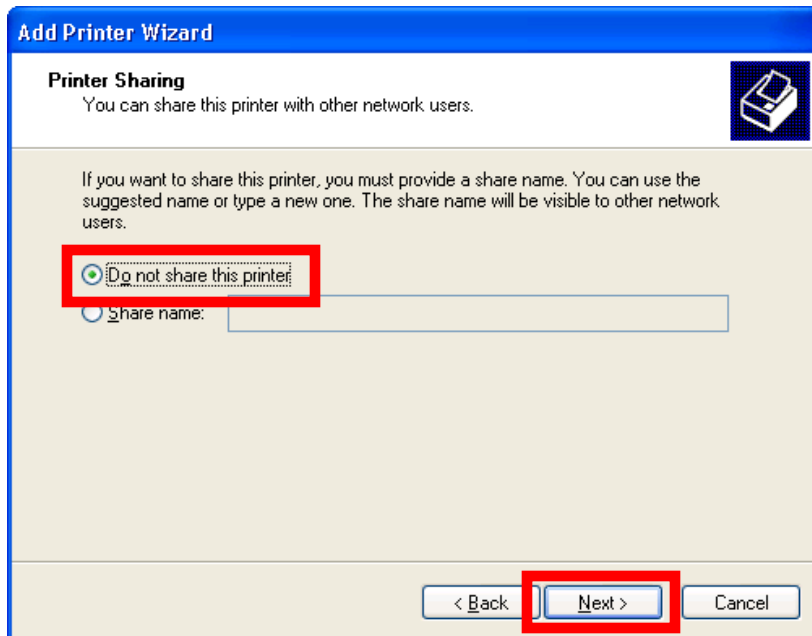






16. Verify **Do not share this printer** is selected.

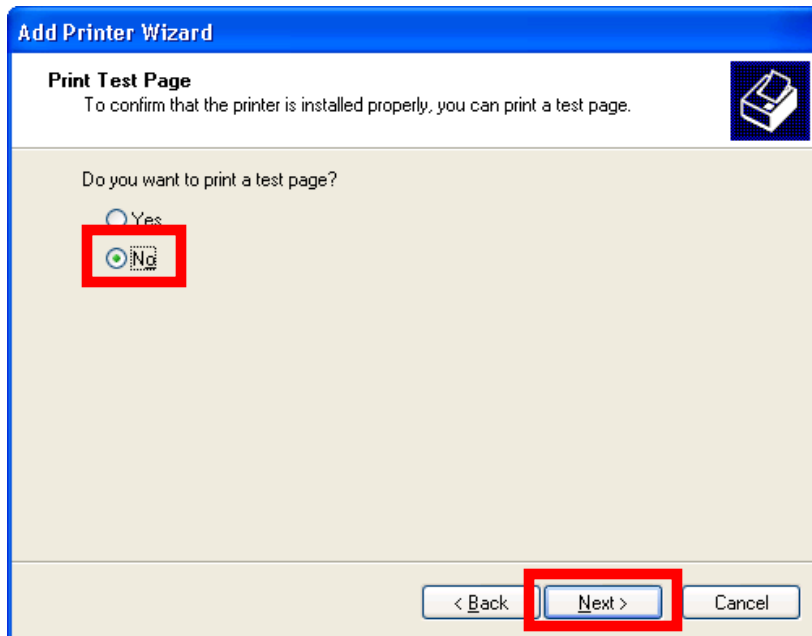
17. Select the **Next** button.





18. Verify **No** is selected so a test page will not be printed.

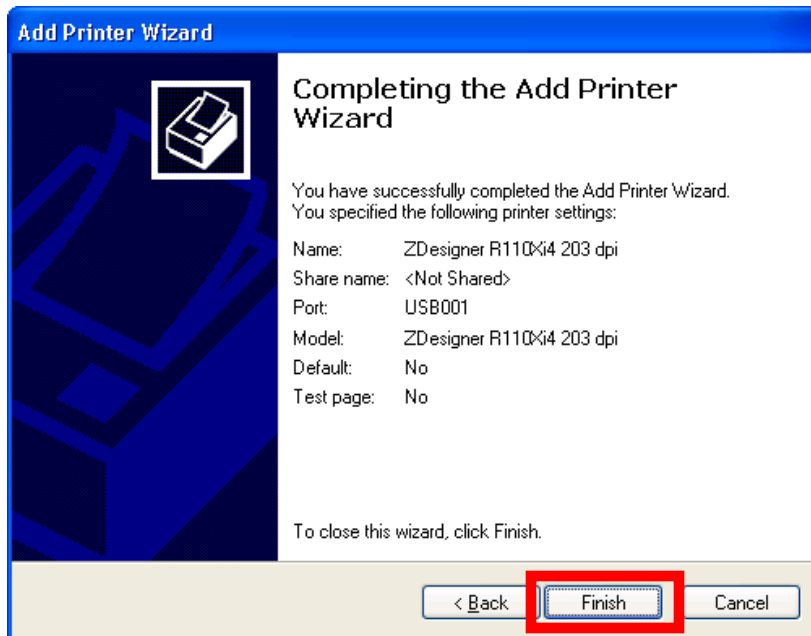
19. Select the **Next** button.





20. The **Add Printer Wizard** success screen displays.

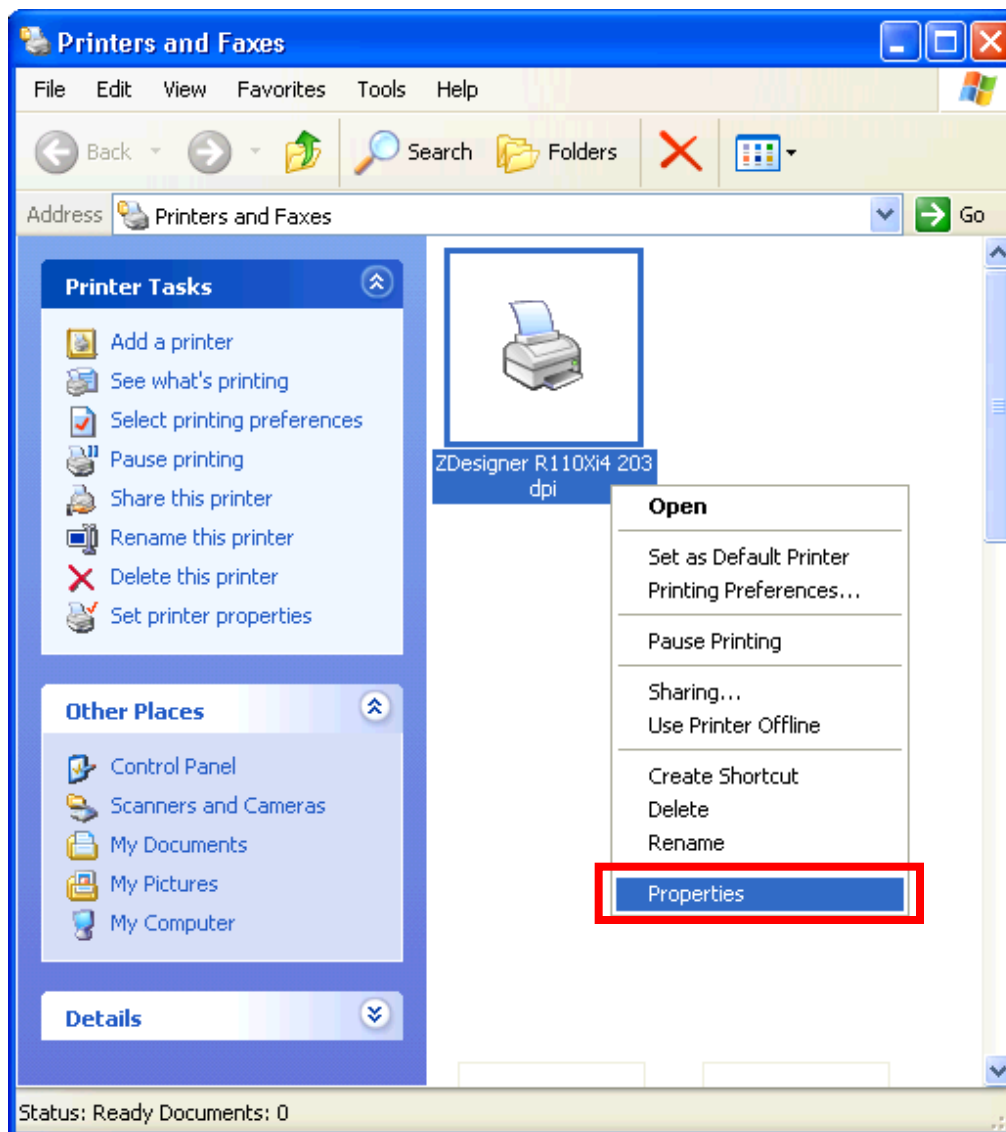
21. Select the **Finish** button and the driver installs.





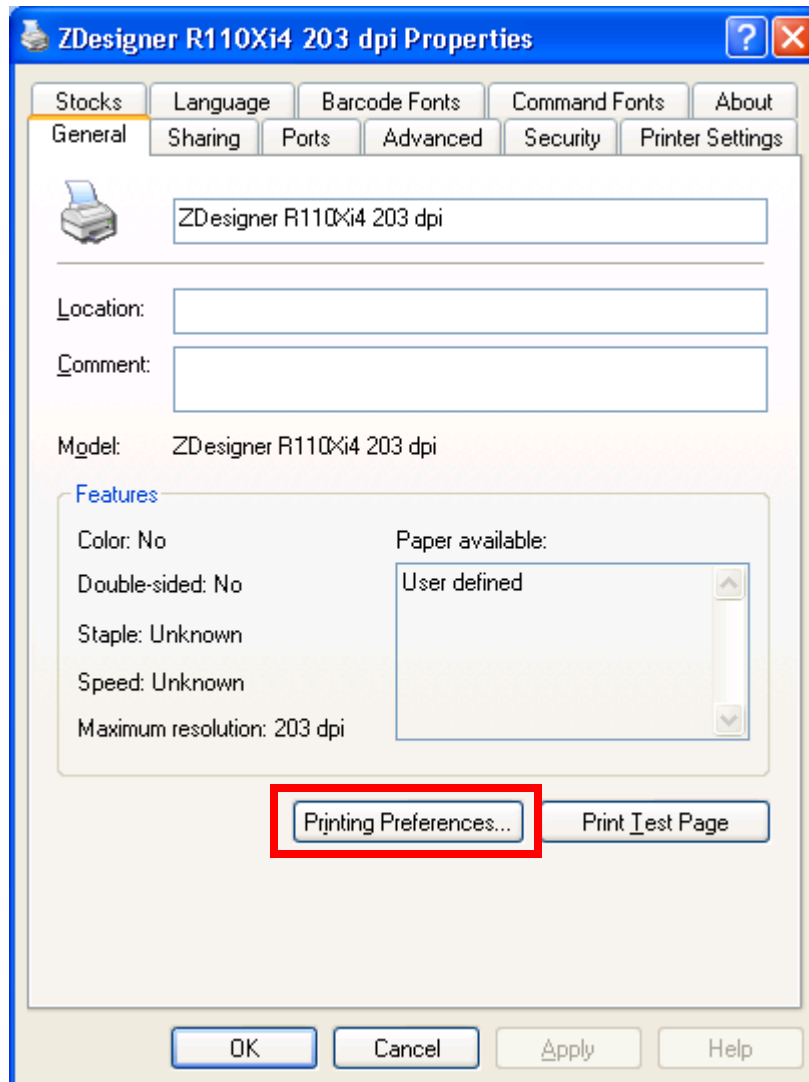
## Configuring the ZDesigner Driver

1. Go to **Start > Printers and Faxes**.
2. Right-click on the printer name entered in the "Installing the ZDesigner Print Driver" section and select **Properties**.



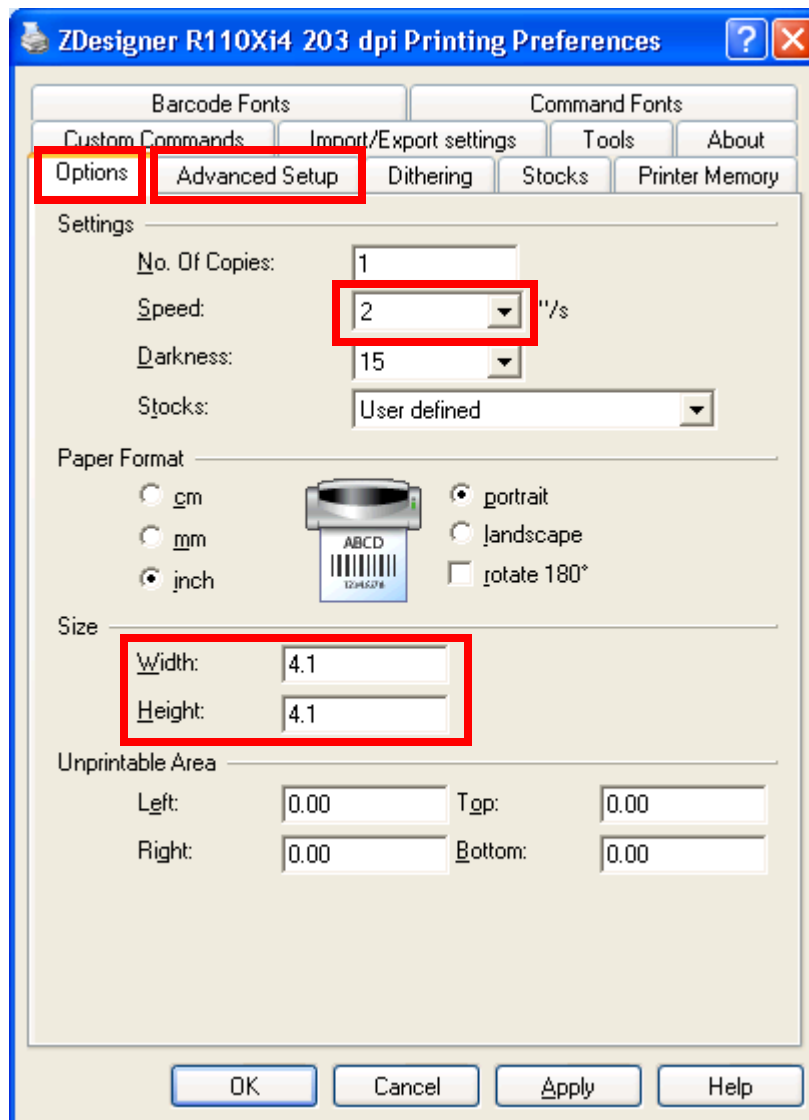


3. Select the **Printing Preferences...** button at the bottom of the **General** tab.





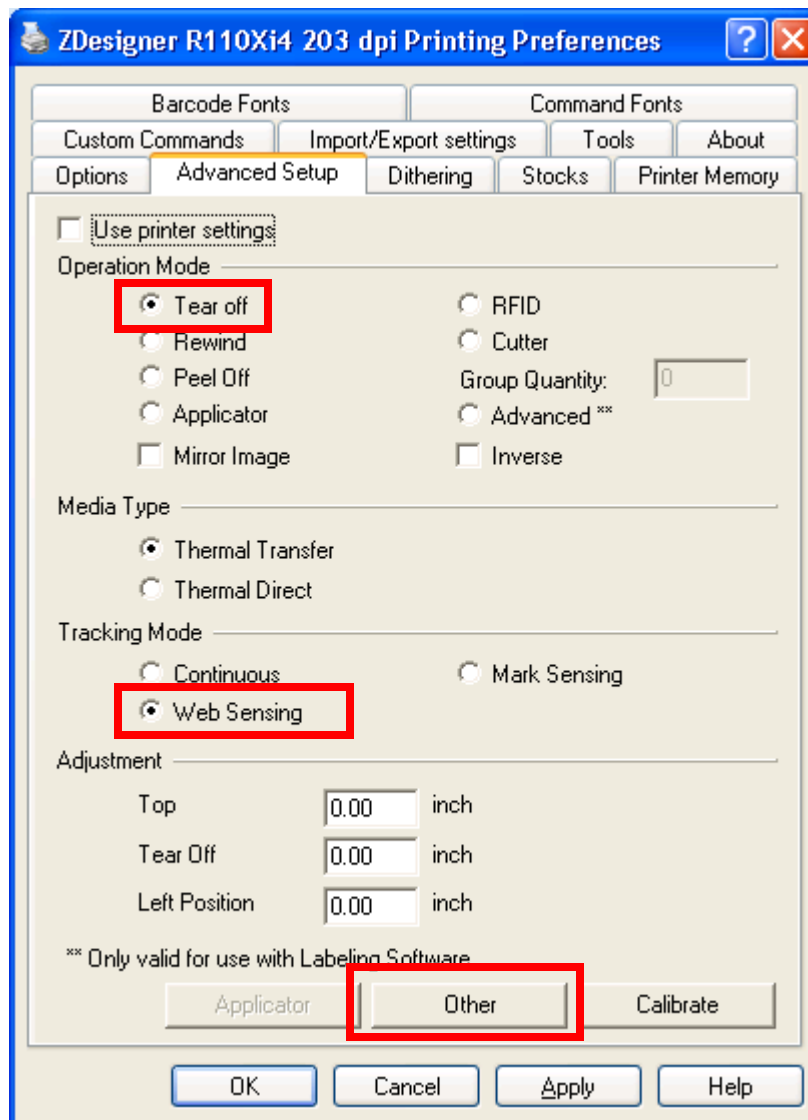
4. From the **Options** tab, under the **Settings** section, change **Speed** to 2.
5. Change **Size** to **Width 4.1** and **Height 4.1**.
6. Select the **Advanced Setup** tab.





## If printing Non-RFID labels:

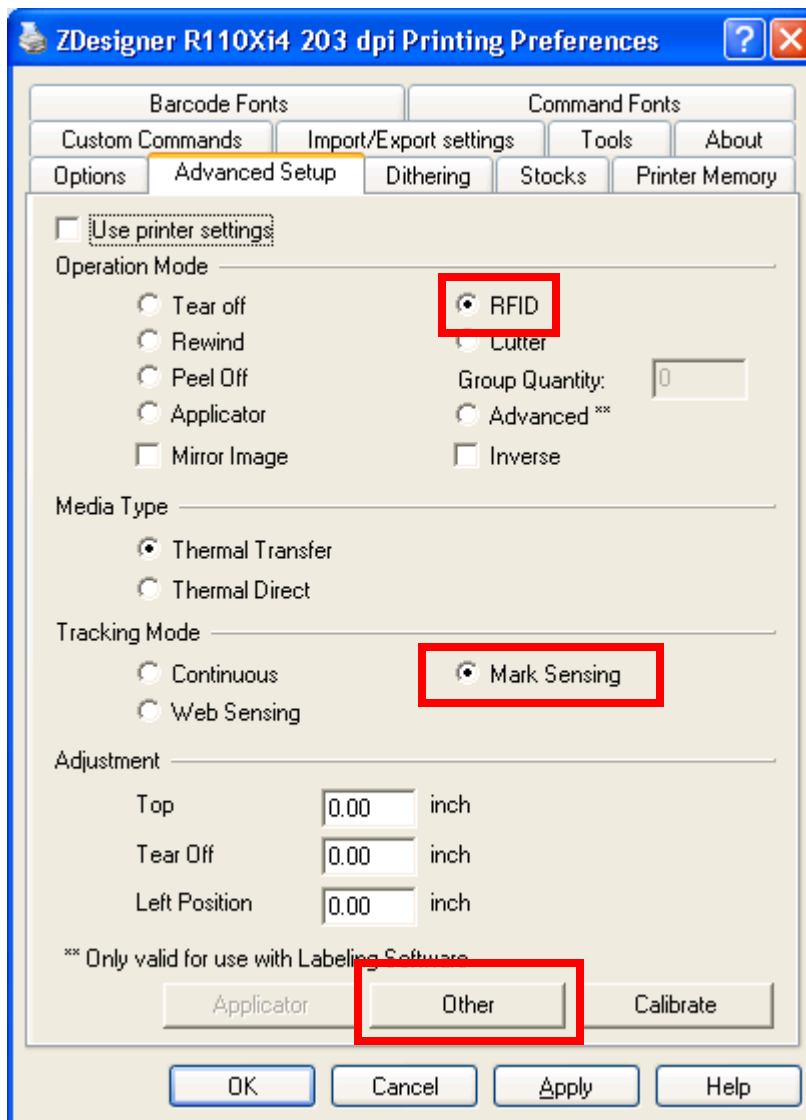
7. Select the **Tear off** radio button from the **Operation Mode** section.
8. Select the **Web Sensing** radio button from the **Tracking Mode** section.
9. Select the **Other** button.





## If printing RFID labels:

7. Select the **RFID** radio button from the **Operation Mode** section.
8. Select the **Mark Sensing** radio button from the **Tracking Mode** section.
9. Select the **Other** button.

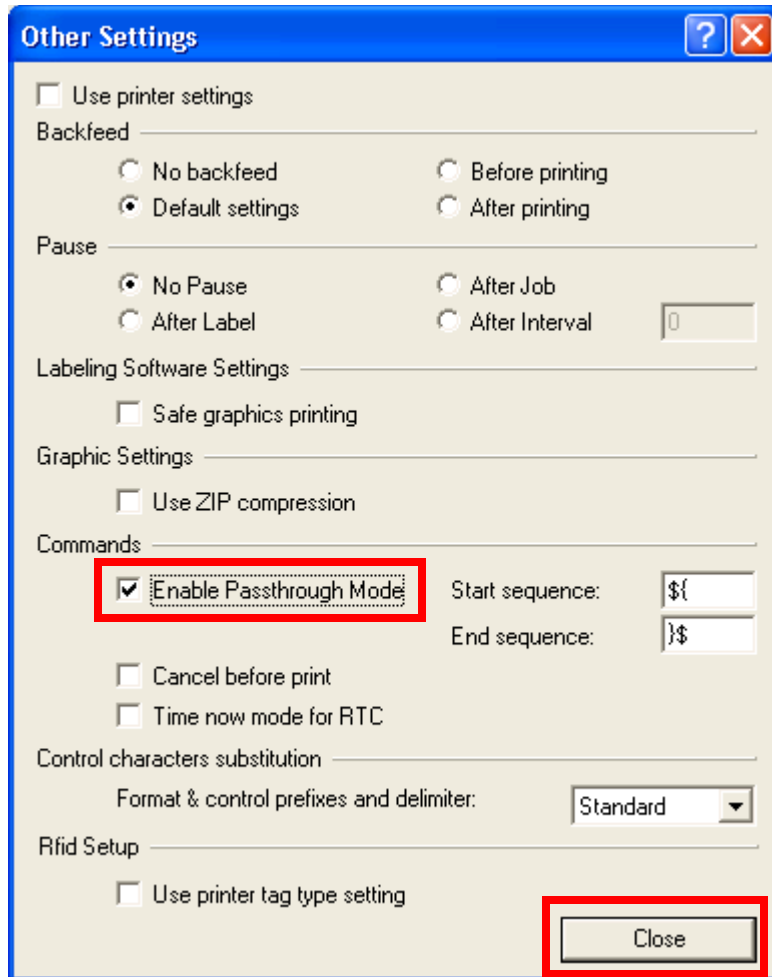






10. Select the **Enable Passthrough Mode** checkbox.

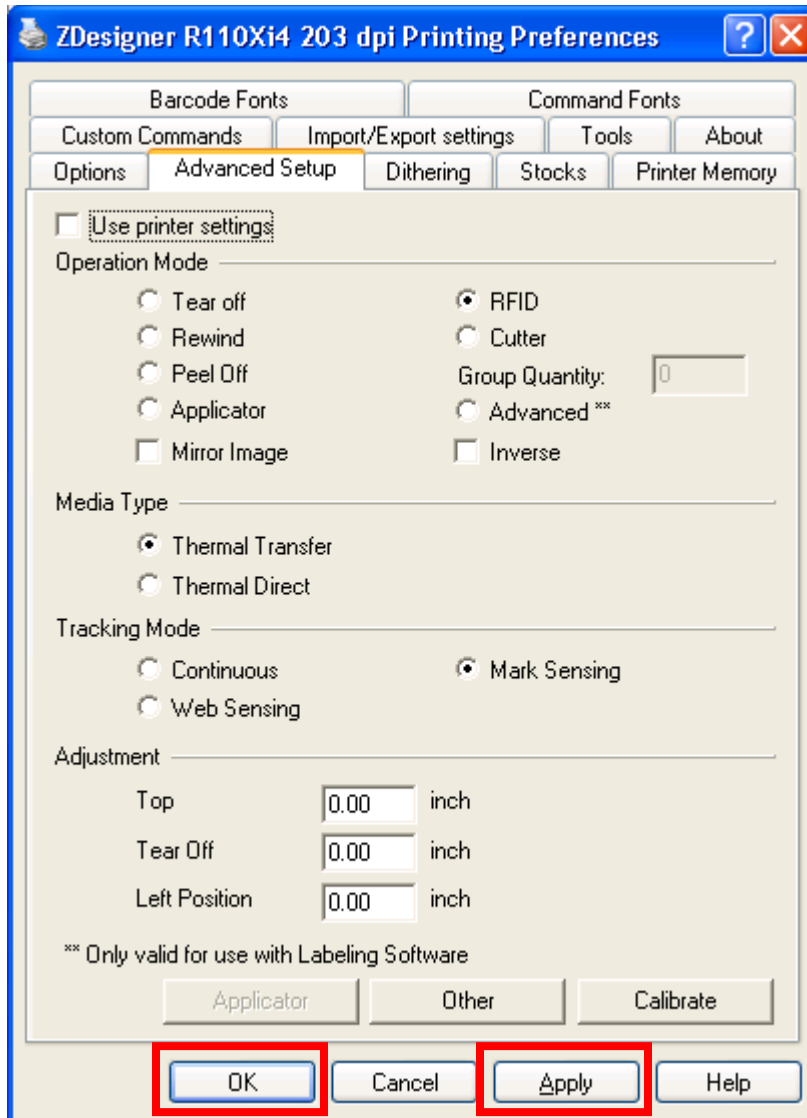
11. Select the **Close** button.



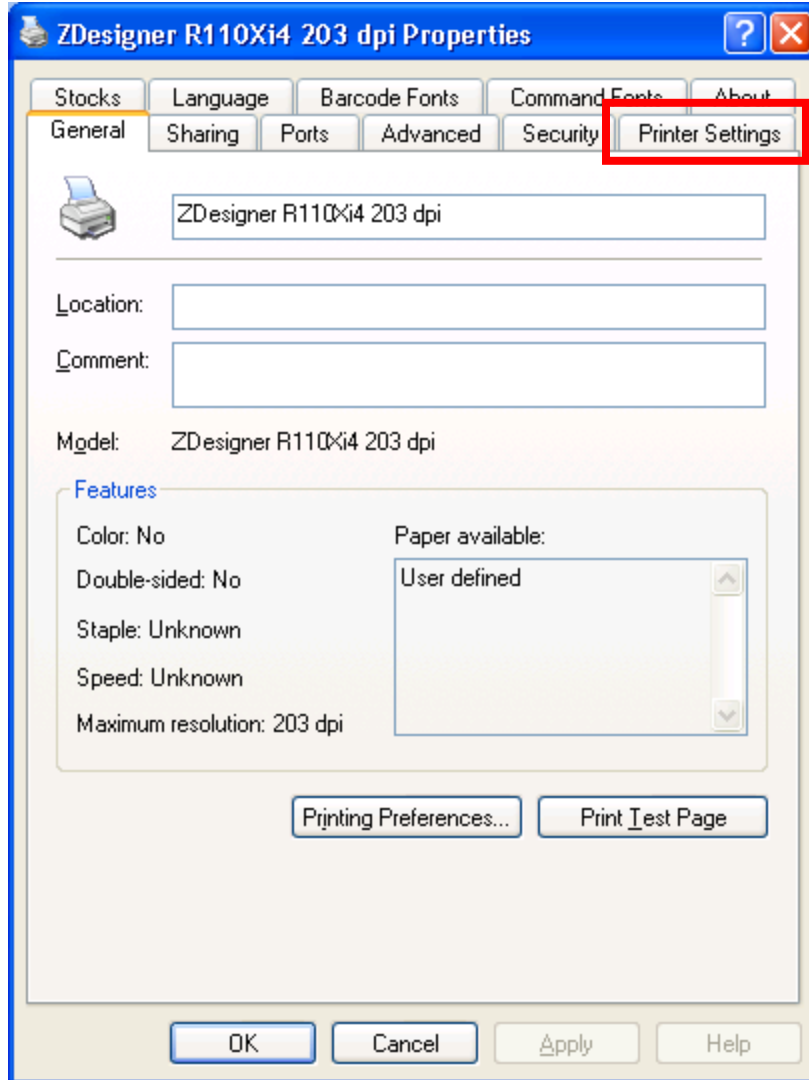


12. Select the **Apply** button.

13. Select the **OK** button.



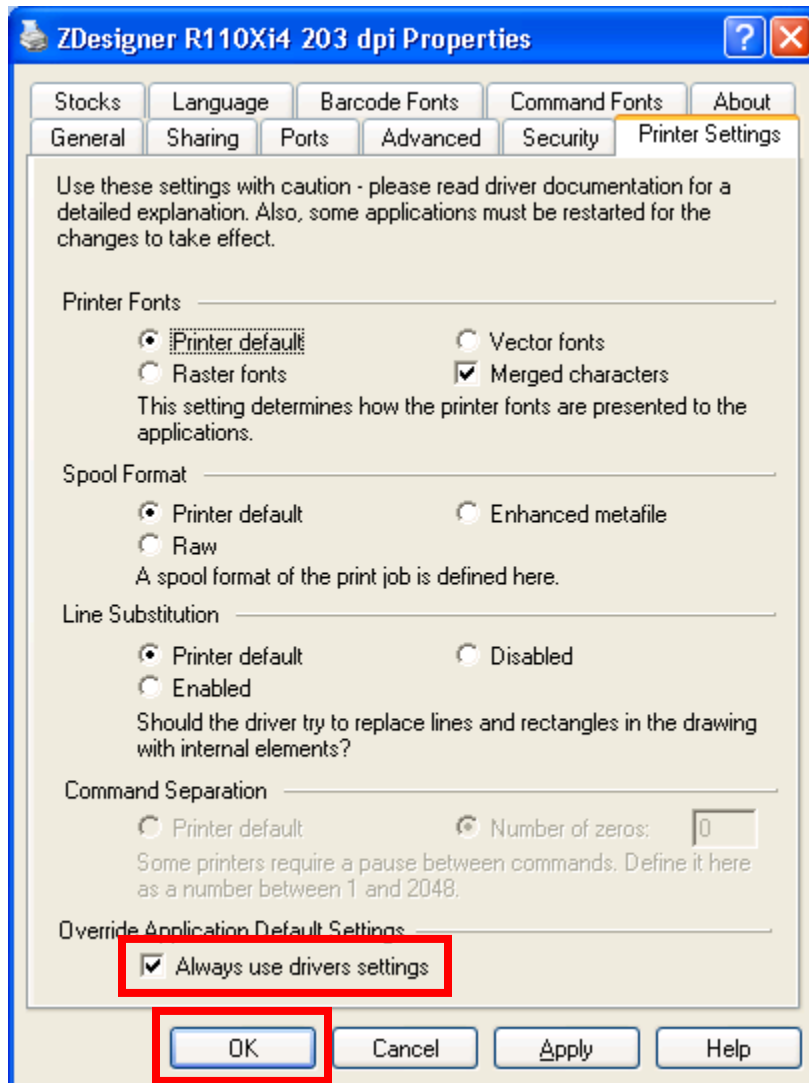
14. Select the **Printer Settings** tab.





15. Select the **Always use drivers settings** checkbox.

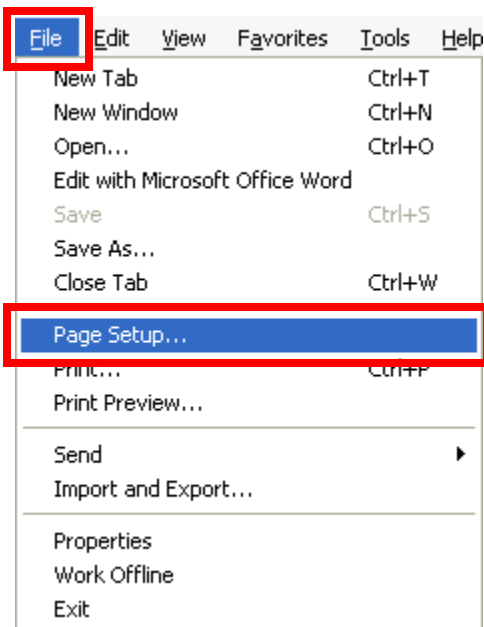
16. Select the **OK** button.





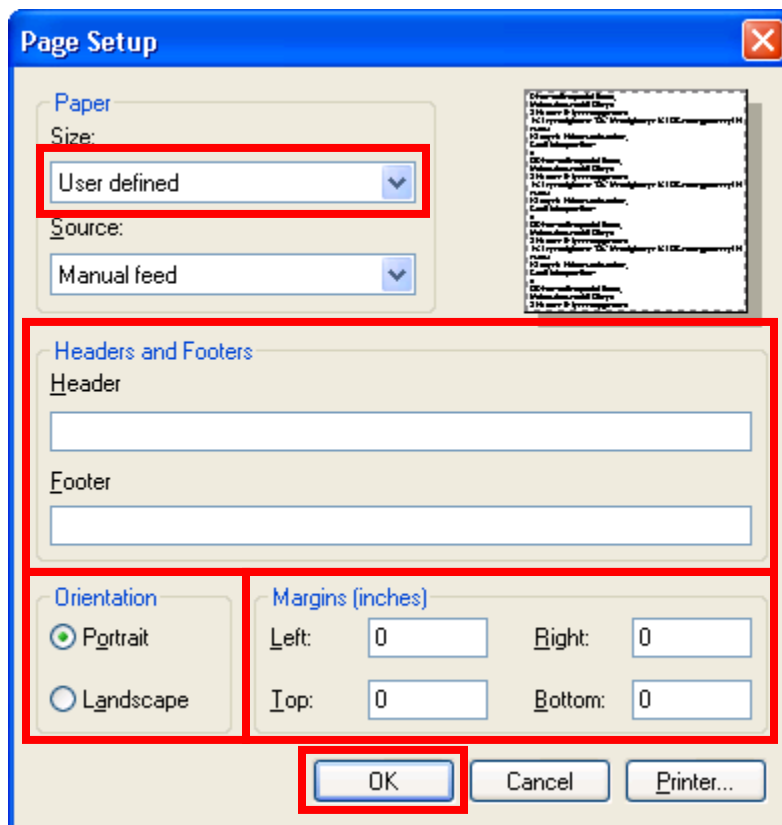
## Configuring Internet Explorer

1. Login to DPAS.
2. Navigate to **AIT > Print Labels**.
3. **\*\*\*IMPORTANT\*\*\*** Print a label from Web DPAS.
4. Select **File** from the Menu bar. (If the Menu bar is not visible, press the **Alt** key on the keyboard)
5. Select **Page Setup**.





6. Set the **Size** to *User*.
7. Remove all text from the **Header** and **Footer** fields.
8. Verify the **Orientation** is set to *Portrait*.
9. Change the **Left**, **Right**, **Top** and **Bottom** Margin settings to *0*. Margins may adjust after the OK button is selected.
10. Select **OK** on the **Page Setup** dialog box.



11. You are now ready to print labels.