



Connecting a Zebra GK420t to Windows 7 via USB

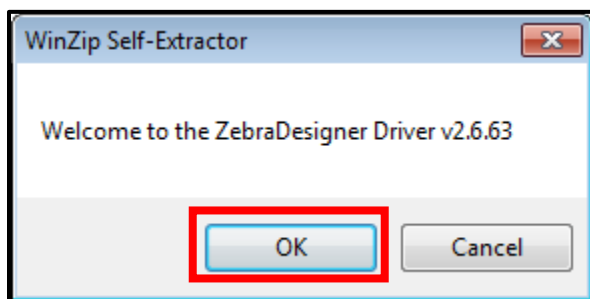
The following instructions are only for the Zebra GK420t printer.

The ZDesigner GK420t driver has been tested and recommended for DPAS use. This driver will support the Zebra GK420t printer approved by DPAS.

Please visit the **Support > Software and Hardware** section of the [DPAS Support Web Site](#) for a listing of approved Web DPAS printers.

Downloading Driver Files

1. In your browser, navigate to <http://tinyurl.com/ks4yxh6>.
2. Select the **ACCEPT AND BEGIN DOWNLOAD NOW** button.
3. Choose **Save**.
4. Save the file to your **Desktop** and do not change the file name.
5. Once the download is complete, navigate to the file on your desktop and open the file.
6. If you receive a security warning, click **Run**.
7. Select **OK**.



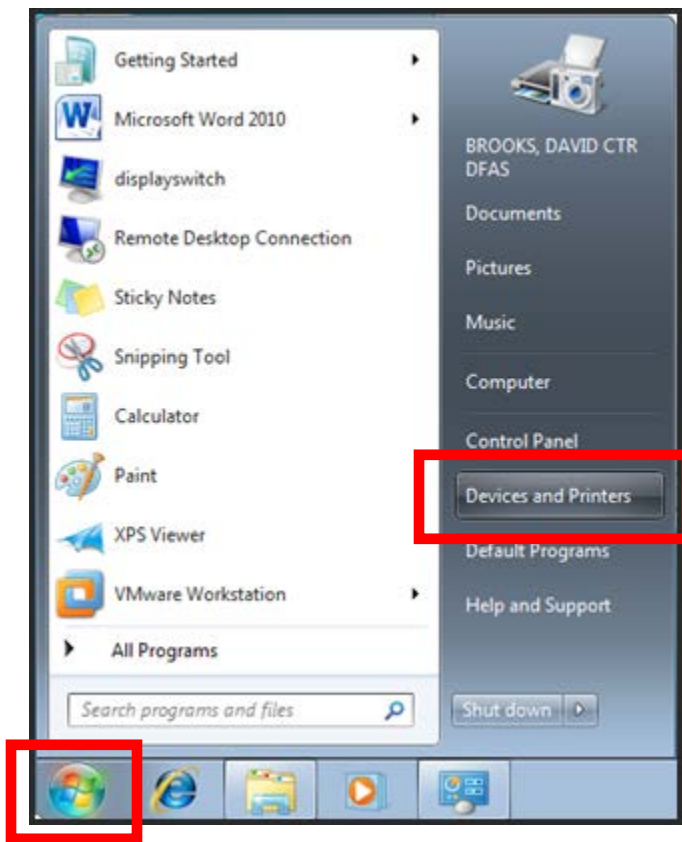
8. The file saved as a ZIP file. When you double-click it, Windows will prompt you to unzip the file. Please make sure it has **C:\ZD2663** as the Unzip to Folder.



9. Ensure the check for **When done unzipping open: PrnInst.exe** is NOT selected.
10. Choose the **UNZIP** button.
11. Select the **OK** button once all files are unzipped successfully.

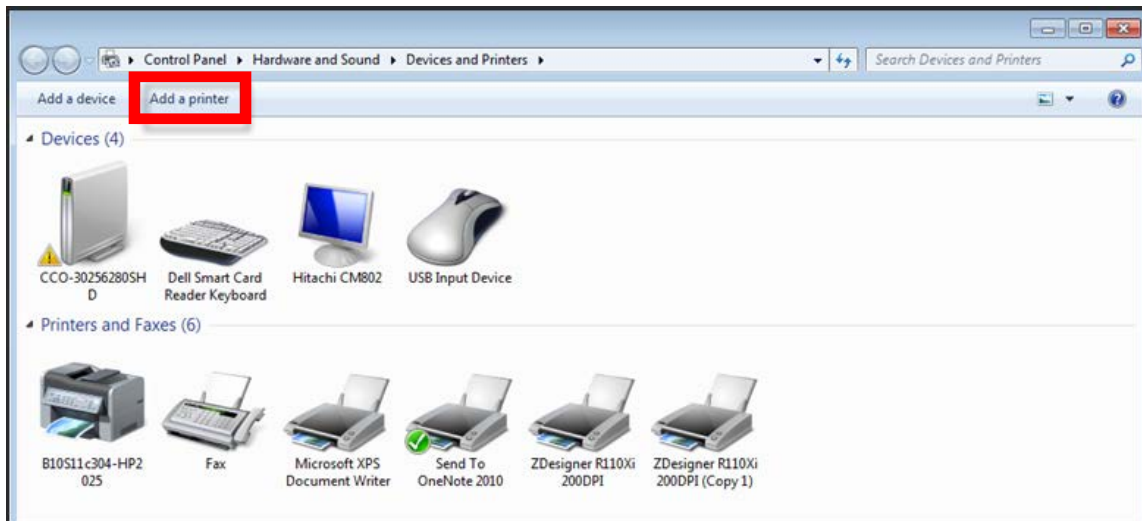
Installing the ZDesigner Print Driver

1. Select **Start > Devices and Printers**.



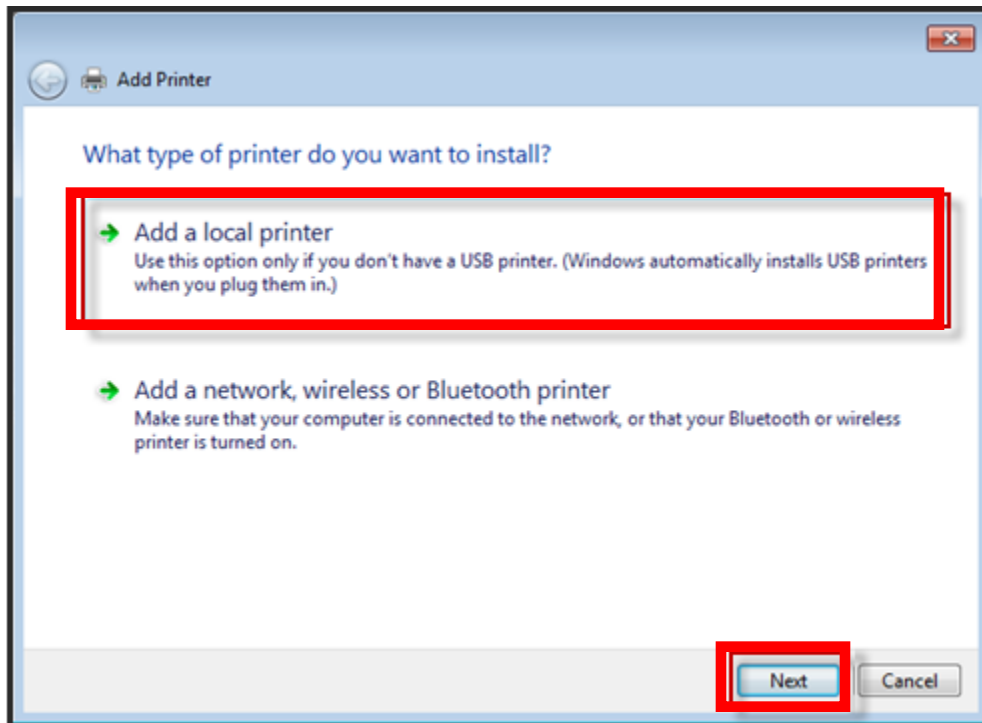


2. Choose the **Add a Printer** option.



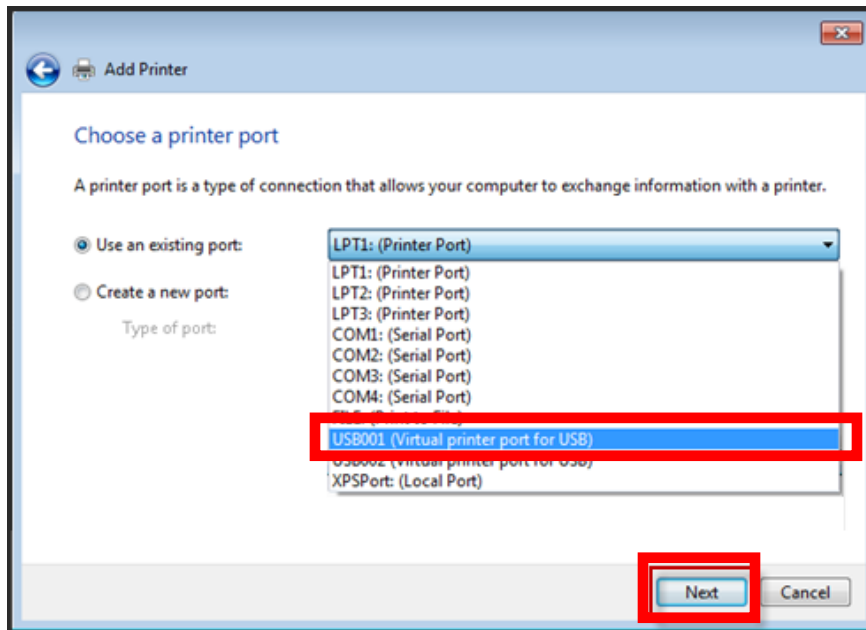


3. Choose **Add a local printer**.
4. Select the **Next** button.



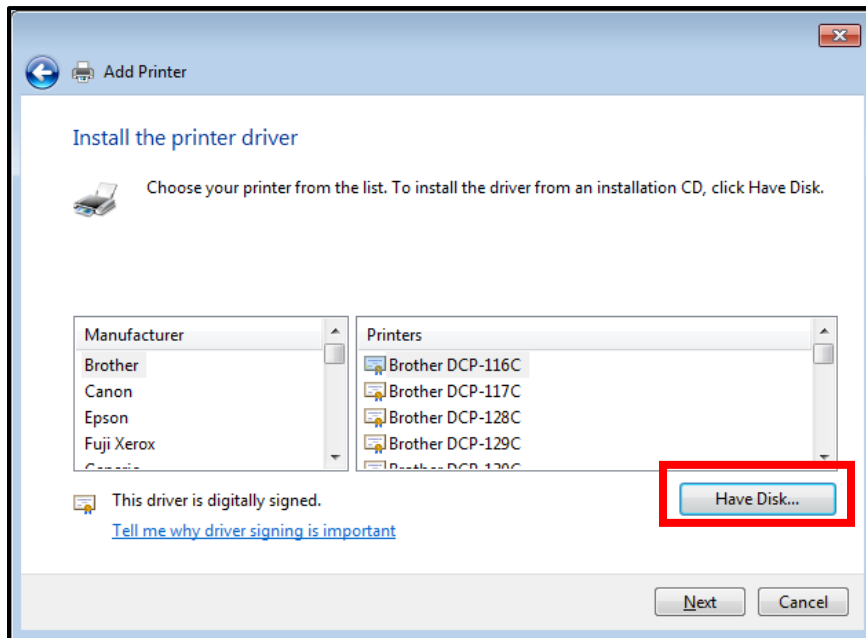


5. Select *Standard USB001 (Virtual port for USB)* from the **Use an existing port** drop-down.
6. Select the **Next** button.



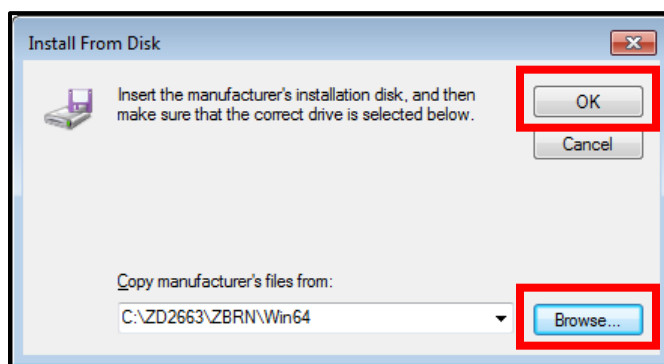


8. Select the **Have Disk...** button.



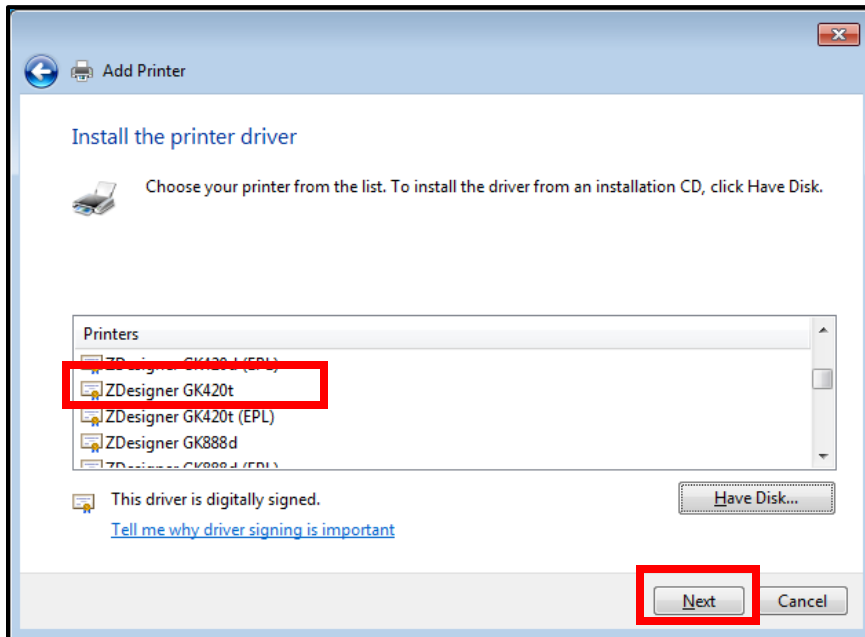
9. Use the **Browse** button to navigate to C:\ZD2663\ZBRN\ and select the Win32 folder if you are using a 32-bit operating system or the Win64 folder if you are using a 64-bit operating system.

10. Select the **OK** button.



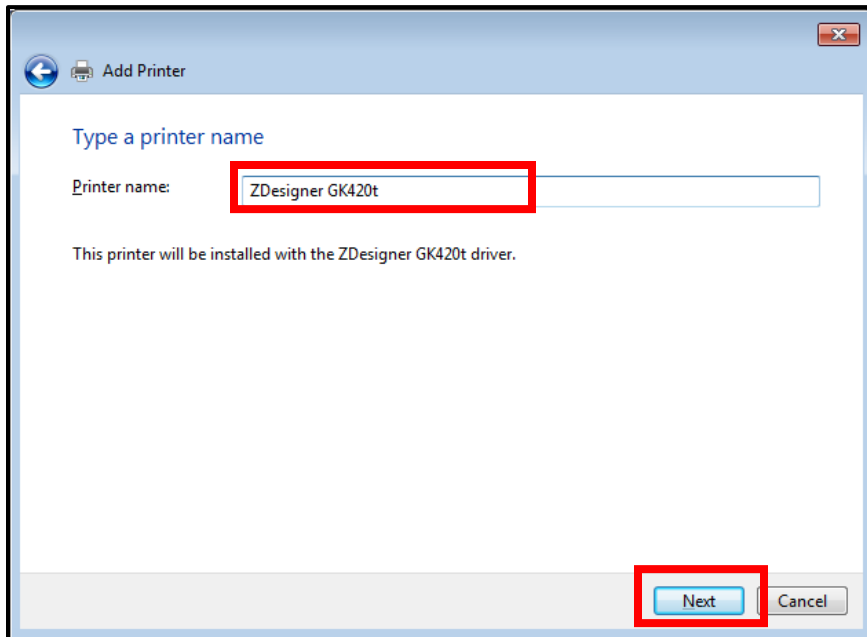


11. Select **ZDesigner GK420t** from the **Printers** list.
12. Select the **Next** button.



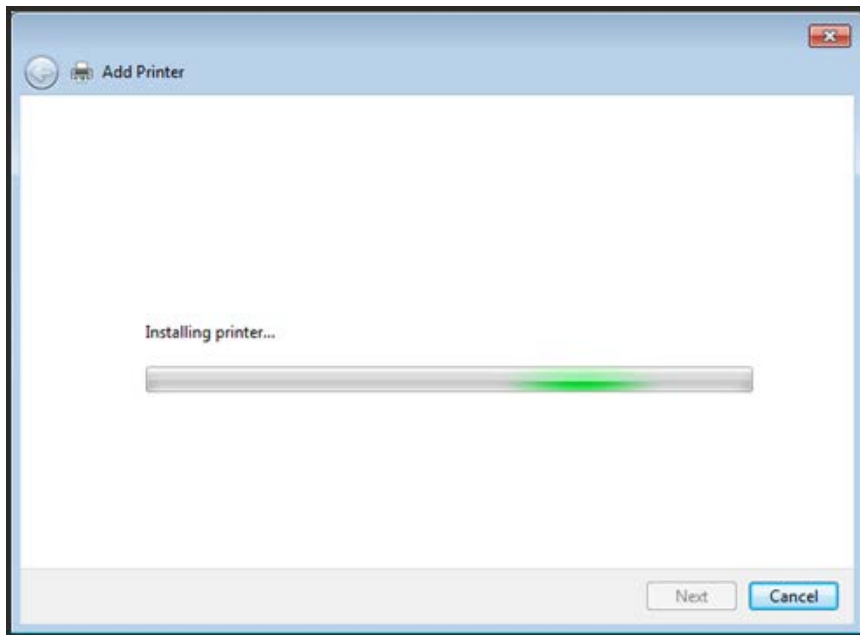


13. Enter a meaningful name for your printer in the **Printer name** field.
14. Choose the **Next** button.



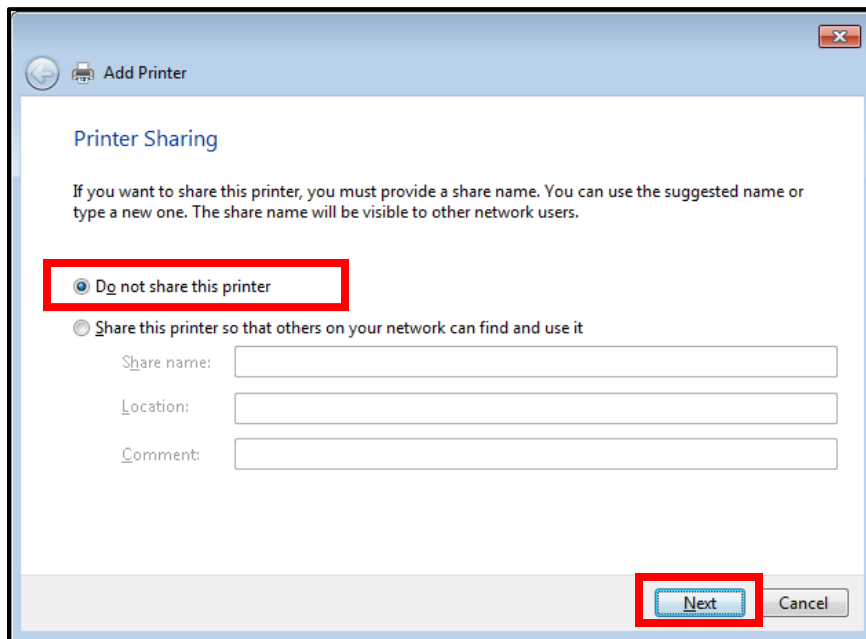


15. Driver installs.



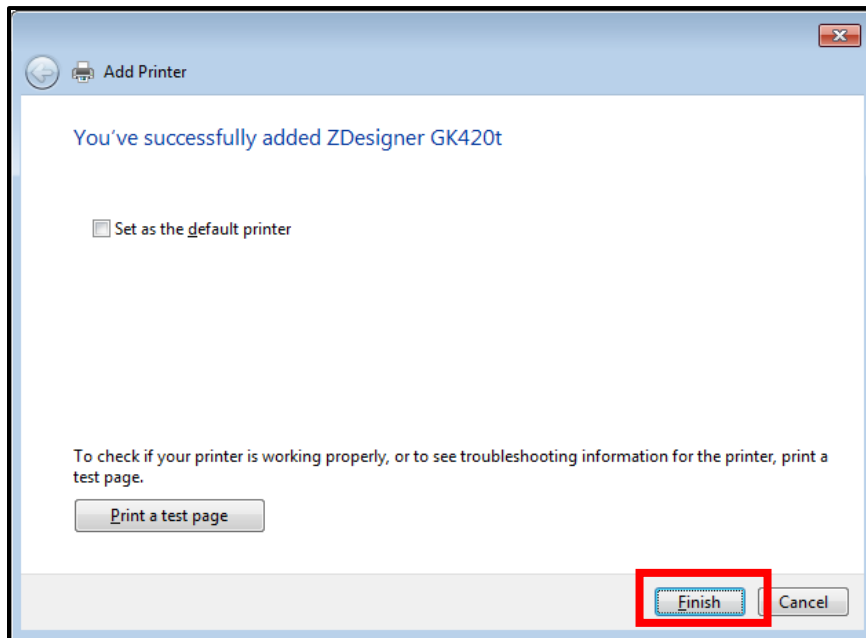


16. Verify the **Do not share this printer** radio button is selected.
17. Select the **Next** button.





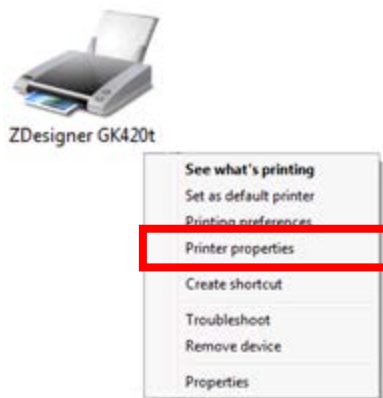
18. Select the **Finish** button.





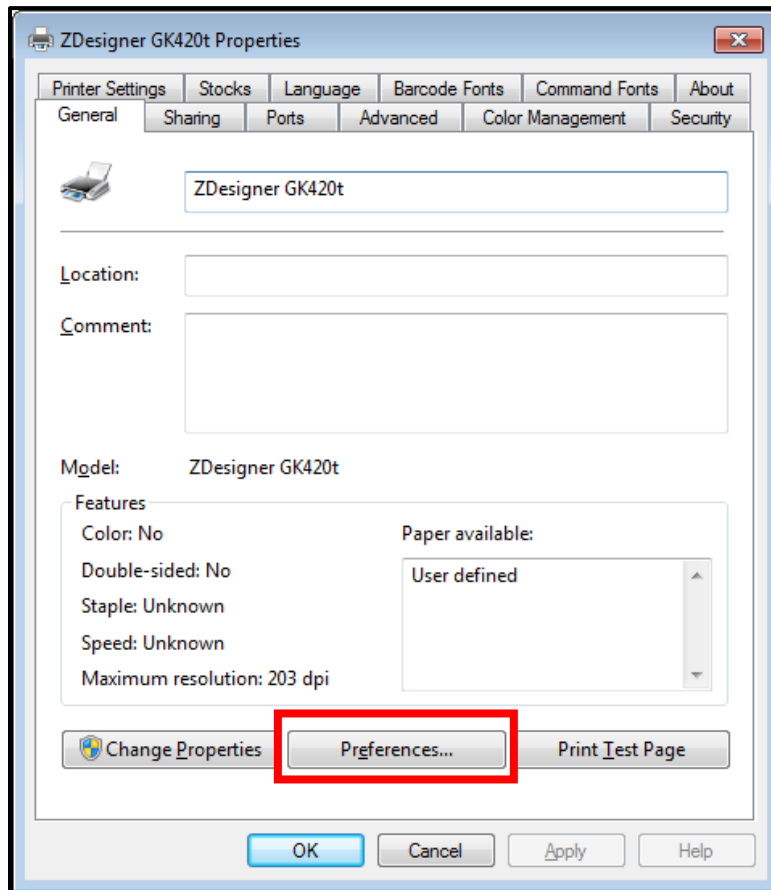
Configuring the ZDesigner Driver

1. Go to **Start > Devices and Printers** or **Start > Control Panel > View devices and printers**.
2. Right-click on the printer name entered in the “Installing the ZDesigner Print Driver” section and select **Printer Properties**. The **ZDesigner properties** window appears.



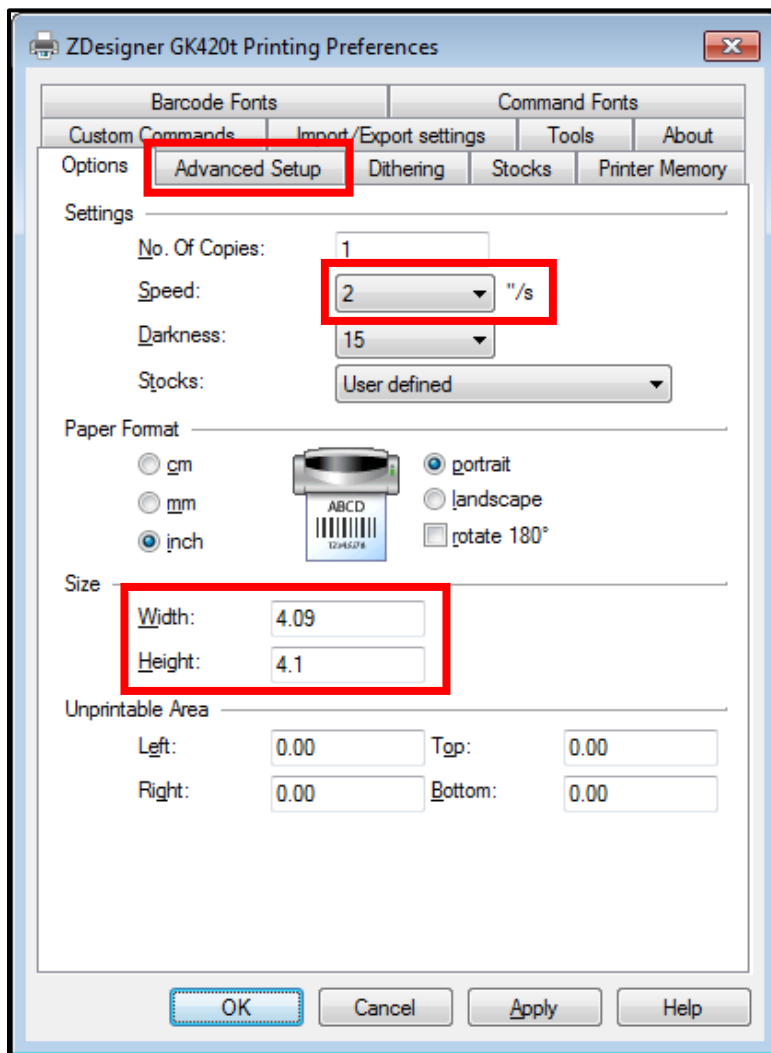


3. Select the **Preferences...** button at the bottom of the **General** tab.



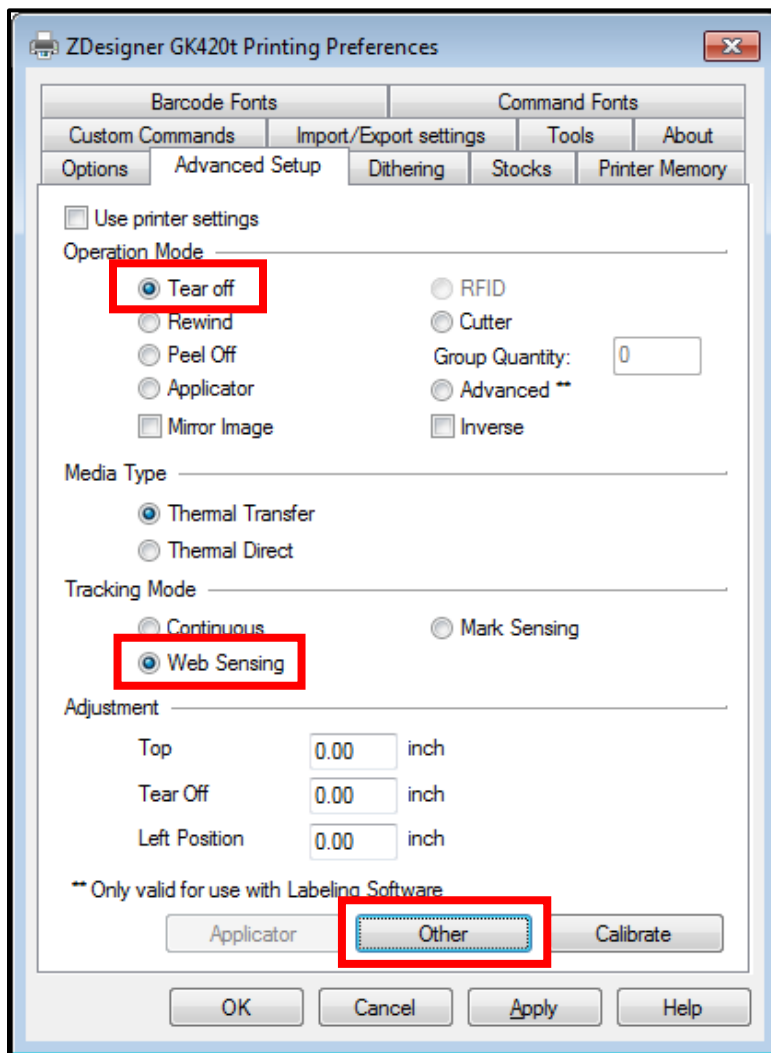


4. From the **Options** tab, under the **Settings** section, change **Speed** to 2.
5. Change Size to **Width 4.09** and **Height 4.10**.
6. Select the **Advanced Setup** tab.



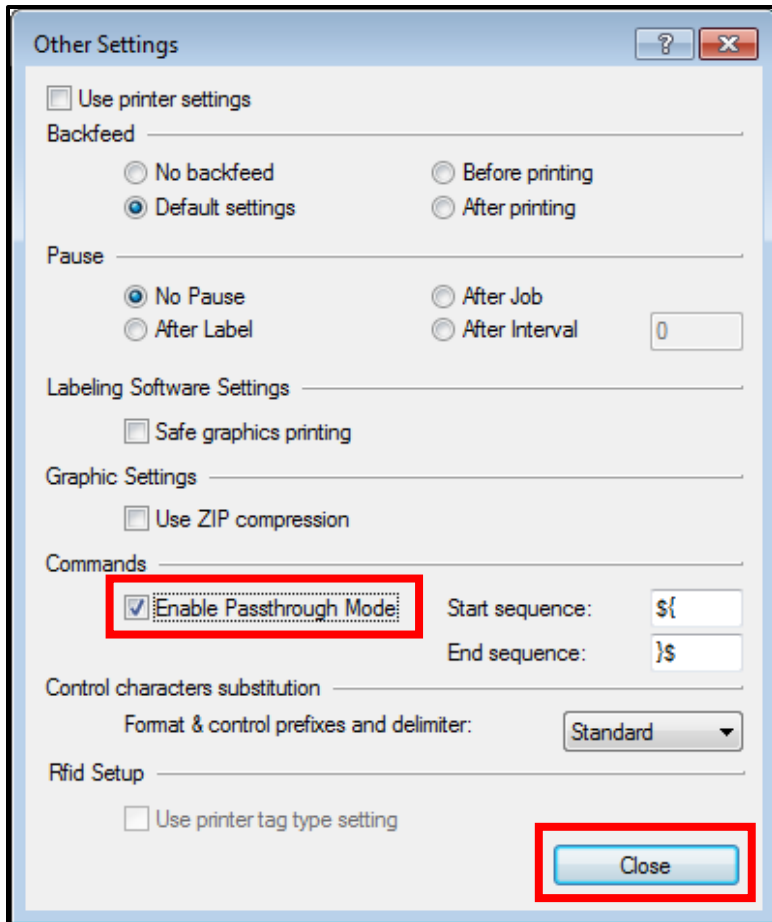


7. Select the **Tear off** radio button from the **Operation Mode** section.
8. Select the **Web Sensing** radio button from the **Tracking Mode** section.
9. Select the **Other** button.



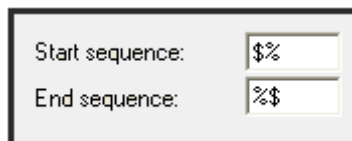


10. Select the **Enable Passthrough Mode** checkbox.
11. Select the **Close** button.



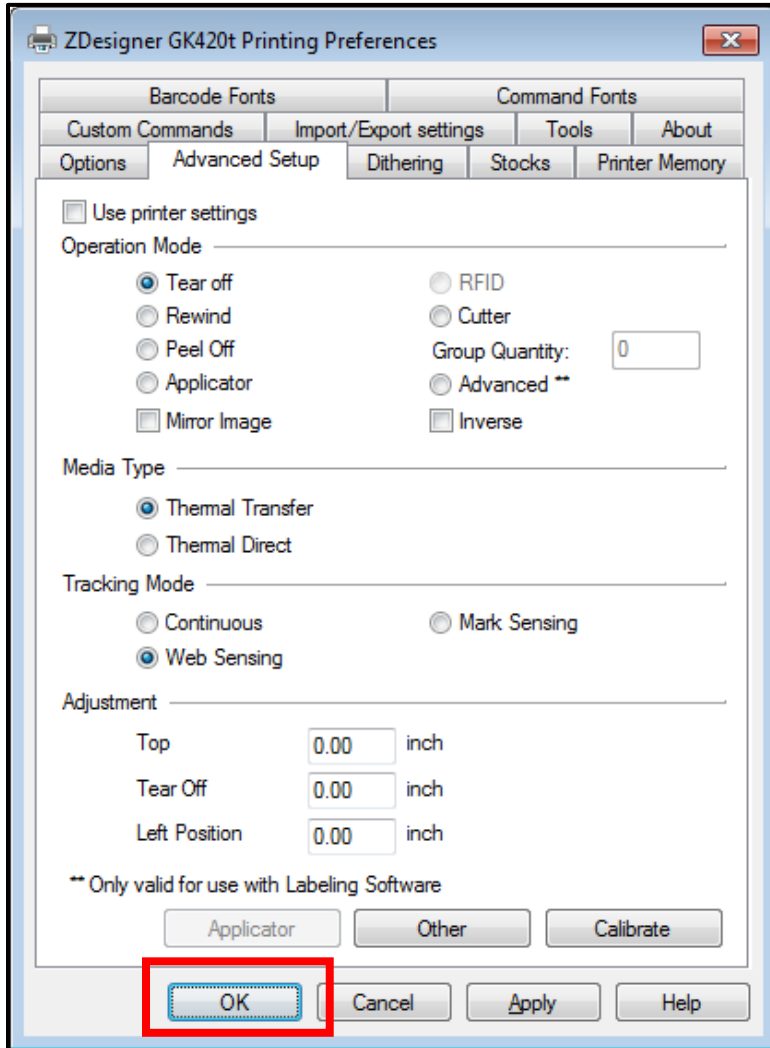
ATTENTION

If you are using Internet Explorer 9 or higher, the **Start sequence** and **End sequence** needs to be changed to **\$\$%**, **%\$\$** respectively.



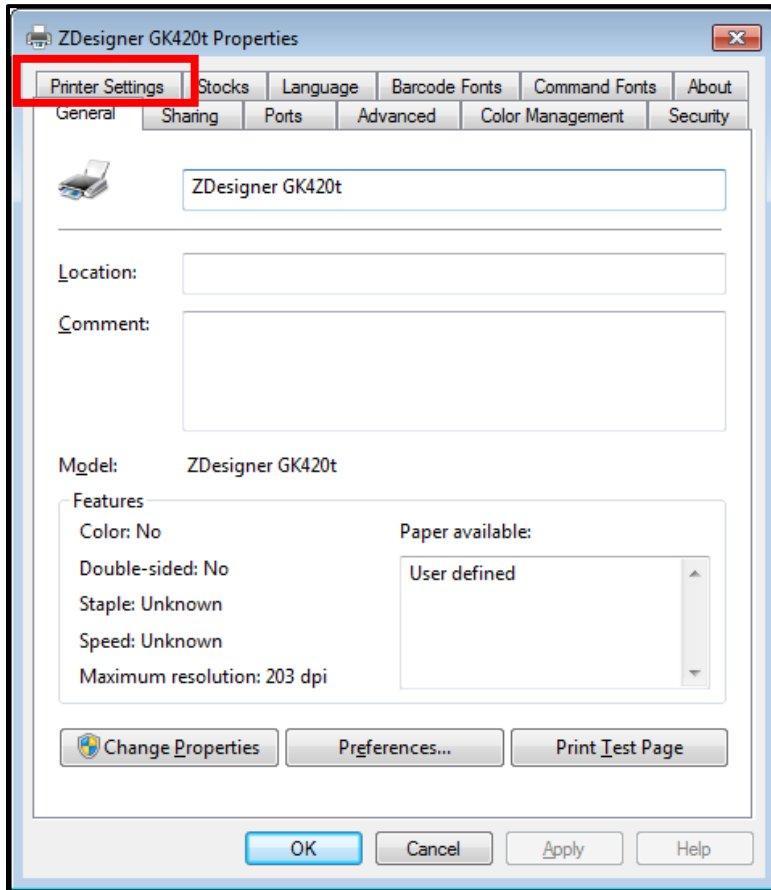


12. Select the **OK** button.





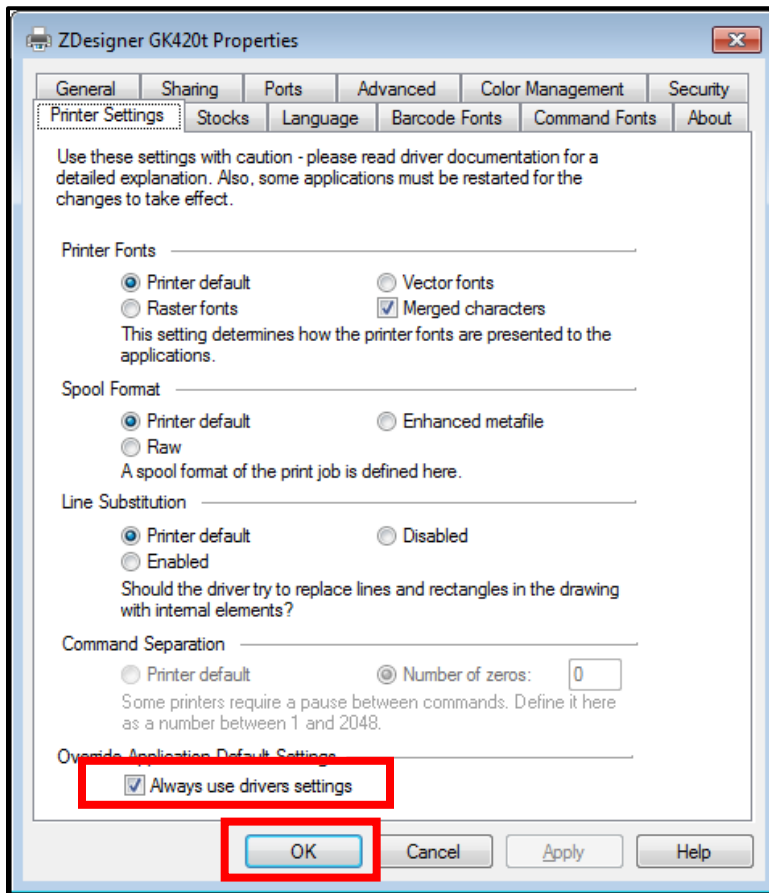
13. Select the **Printer Settings** tab.





14. Select the **Always use driver settings** checkbox.

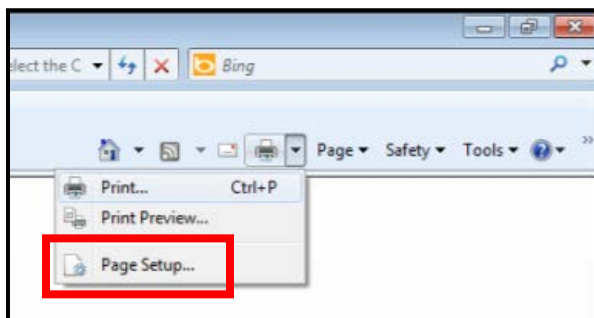
15. Select the **OK** button.





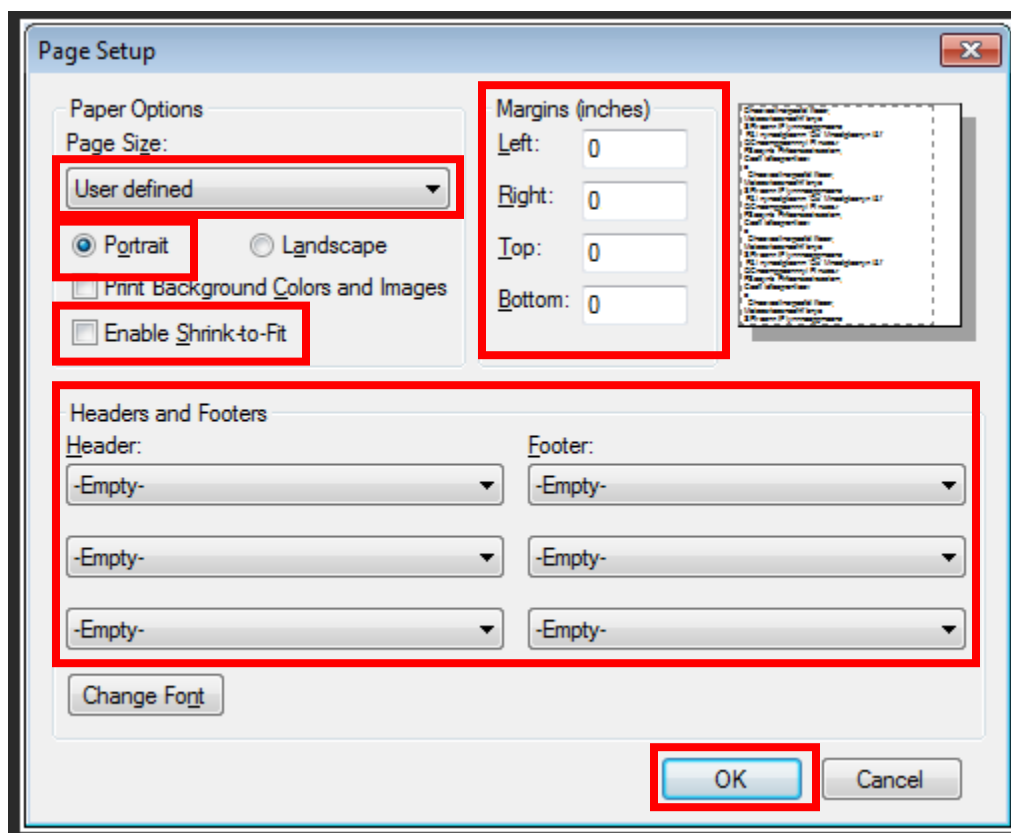
Configuring Internet Explorer

1. Login to DPAS.
2. Navigate to **AIT > Print Labels**.
3. *****IMPORTANT***** Print a label from Web DPAS.
4. Select the **Print Menu** at the top of Internet Explorer.
5. Select **Page Setup**.





6. Verify the **Page Size** is set to *User defined*.
7. Verify the **Orientation** is set to *Portrait*.
8. Uncheck the **Enable Shrink-to-Fit** checkbox.
9. Change the **Left, Right, Top** and **Bottom** Margin settings to *0*. Margins may adjust after the **OK** button is selected.
10. Change all **Header** and **Footer** fields to *-Empty-*.
11. Select **OK** on the **Page Setup** dialog box.



12. You are now ready to print labels.