



Connecting a Zebra GK420t to Windows XP via Network

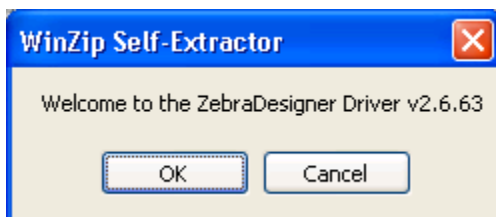
The following instructions are only for the Zebra GK420t printer.

The ZDesigner GK420t driver has been tested and recommended for DPAS use. This driver will support the Zebra GK420t printer approved by DPAS.

Please visit the **Support > Software and Hardware** section of the [DPAS Support Web Site](#) for a listing of approved DPAS printers.

Downloading Driver Files

1. In your browser, navigate to <http://tinyurl.com/ks4yxh6>
2. Select the **ACCEPT AND BEGIN DOWNLOAD NOW** button.
3. Choose **Save**.
4. Save the file to your **Desktop** and do not change the file name.
5. Once the download is complete, navigate to the file on your desktop and open the file.
6. If you receive a security warning, click **Run**.
7. Select **OK**.



8. The file saved as a ZIP file. When you double-click it, Windows will prompt you to unzip the file. Please make sure it has **C:\ZD2663** as the Unzip to Folder.
9. Ensure the check for **When done unzipping open: PrnInst.exe** is selected.

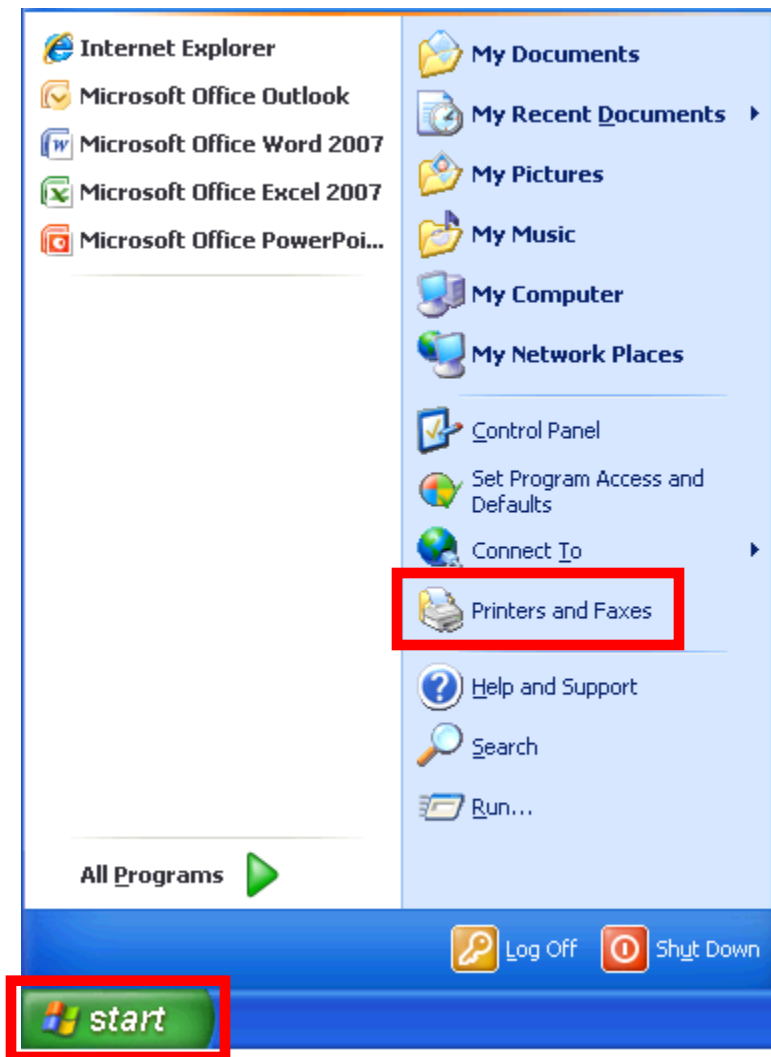


10. Choose the **Unzip** button.

11. Select the **OK** button once all files are unzipped successfully.

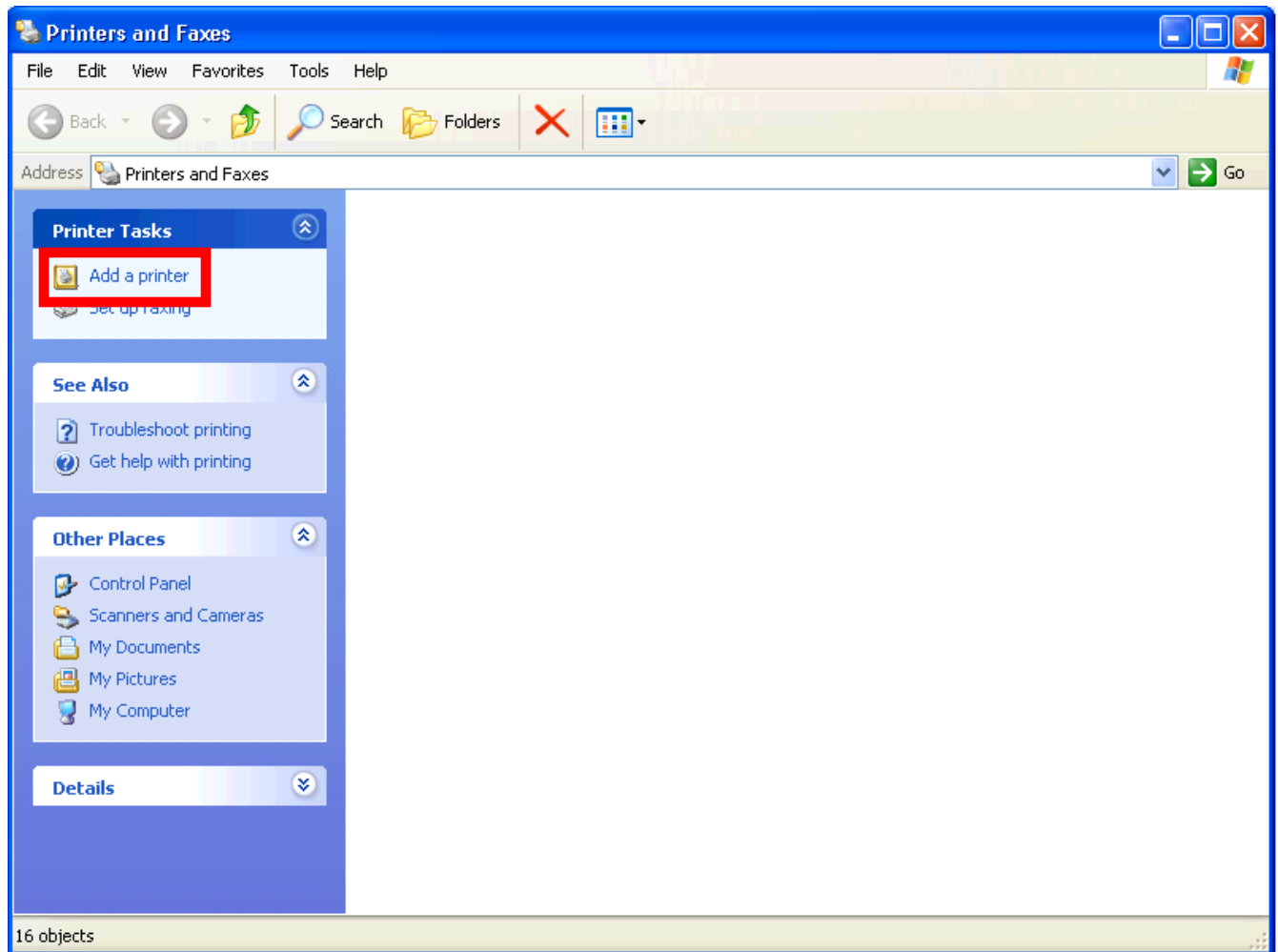
Installing the ZDesigner Print Driver

1. Select **Start > Printers and Faxes**.



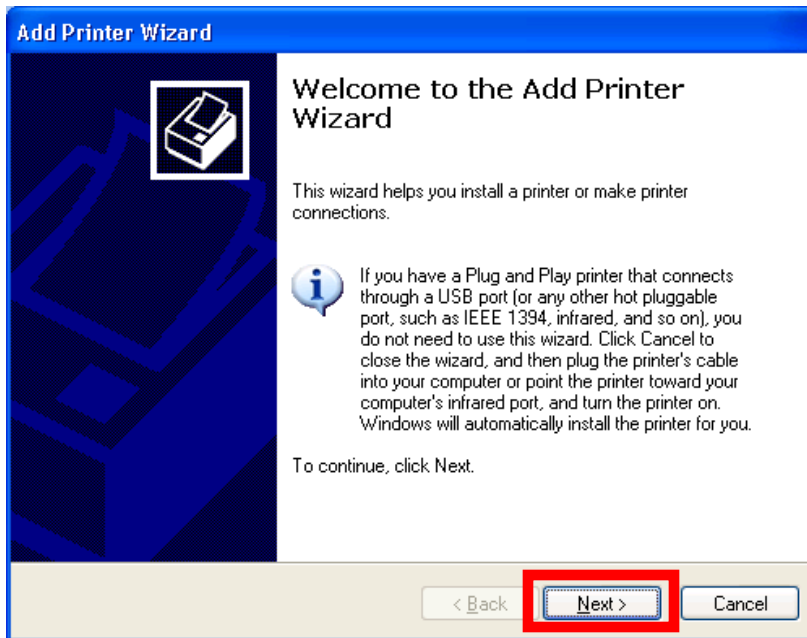


2. Choose the **Add a Printer** option.



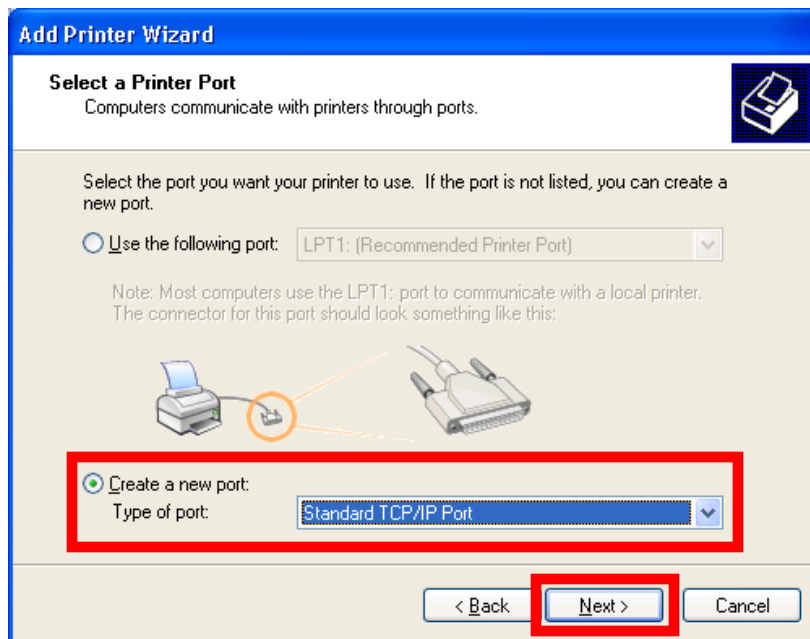


3. The **Add Printer Wizard** displays. Select the **Next** button.



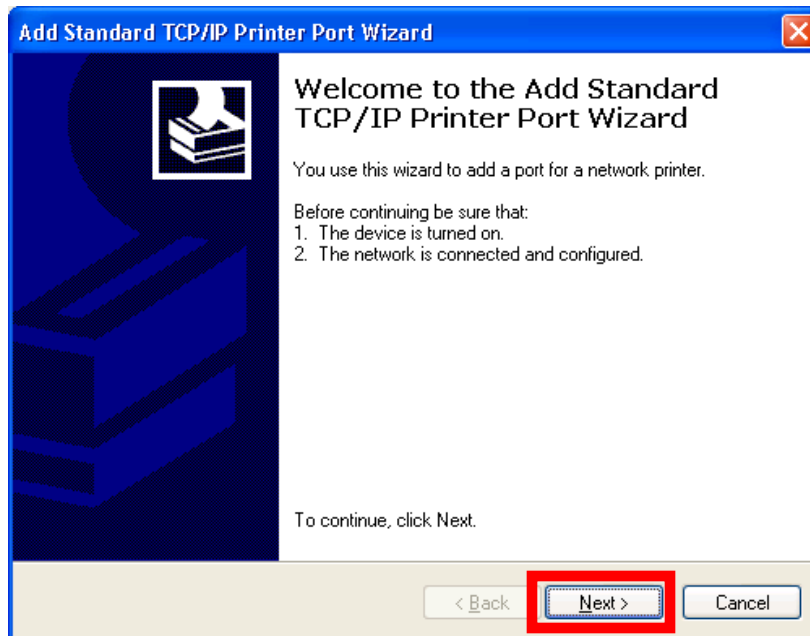


4. Select the **Create a new port** radio button.
5. Select **Standard TCP/IP Port** from the **Type of port** drop-down list.
6. Select the **Next** button.



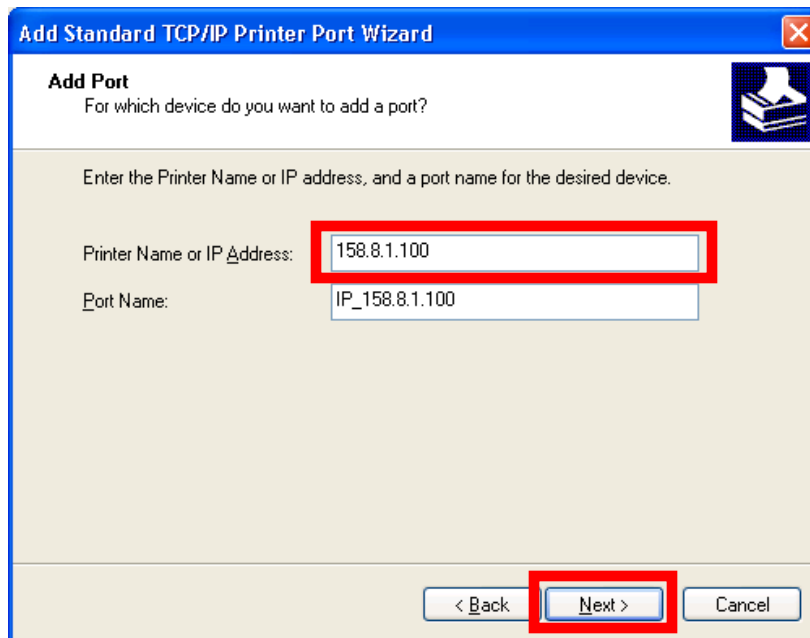


7. The **Add Standard TCP/IP Printer Port Wizard** displays.
8. Select the **Next** button.



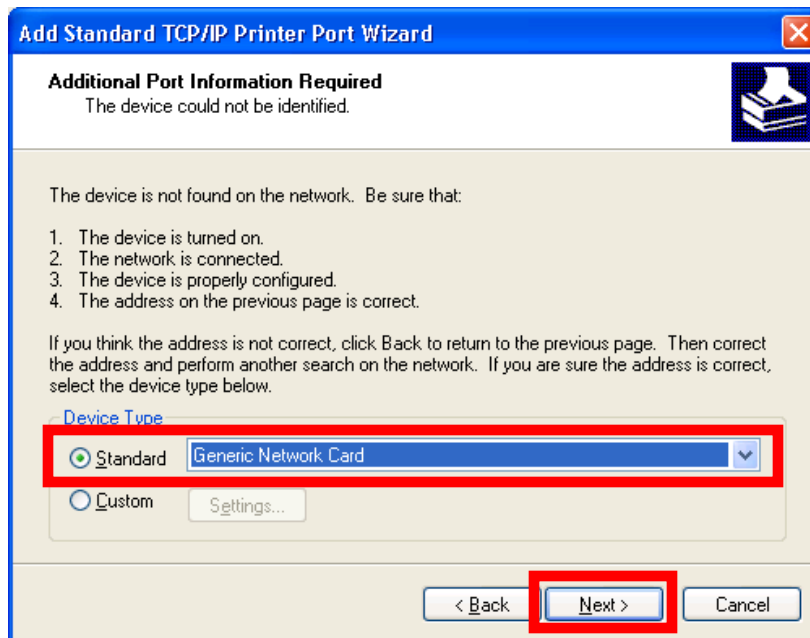


9. Enter the IP address for the printer in the **Printer Name or IP Address** field. The **Port Name** will automatically fill in.
10. Select the **Next** button.





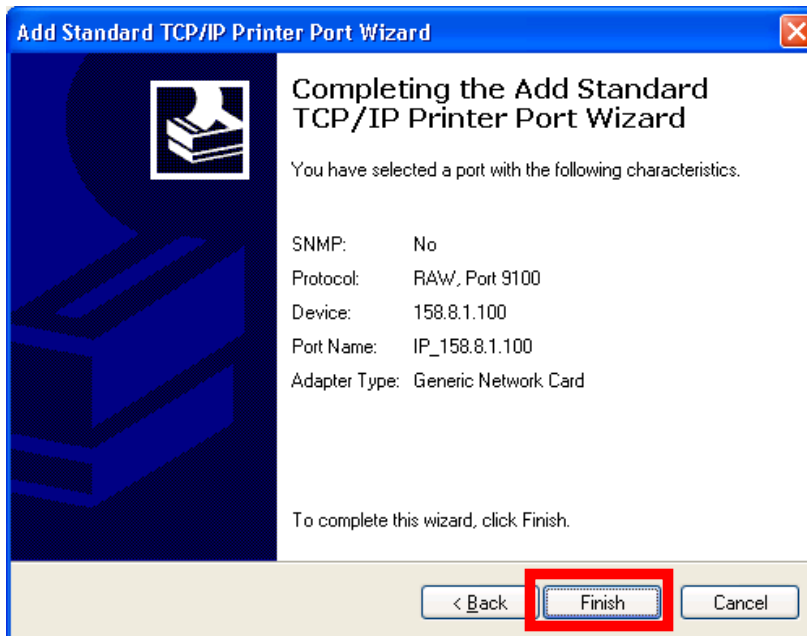
11. Verify the **Device Type** is set to **Standard** and **Generic Network Card** is selected from the drop-down list.
12. Select the **Next** button.





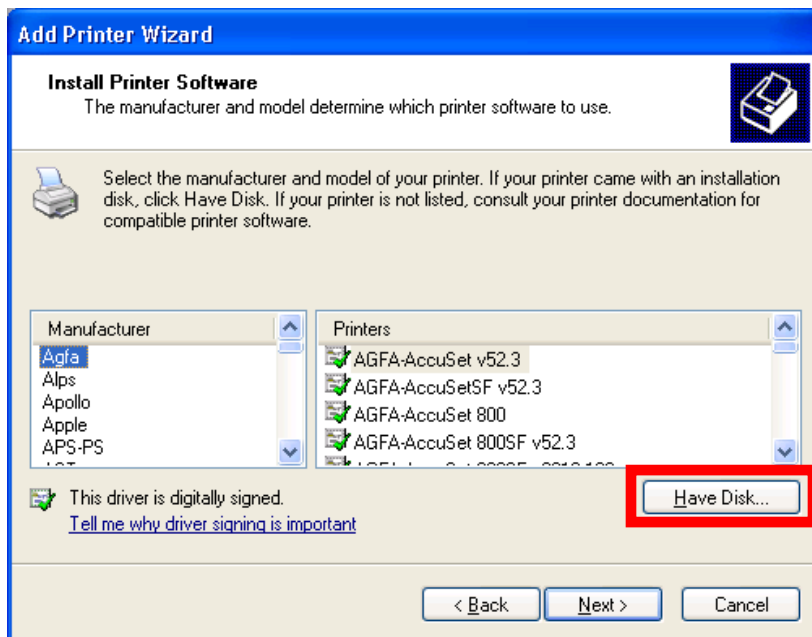
13. Verify the information displayed.

14. Select the **Finish** button.



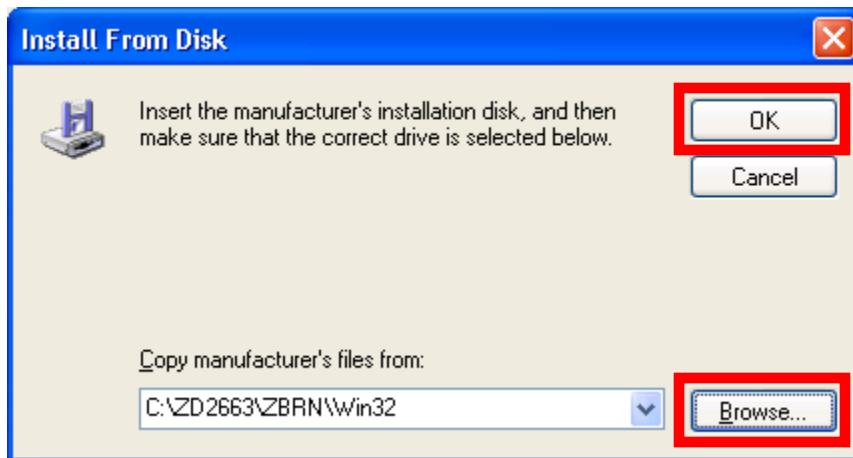


15. Select the **Have Disk...** button.

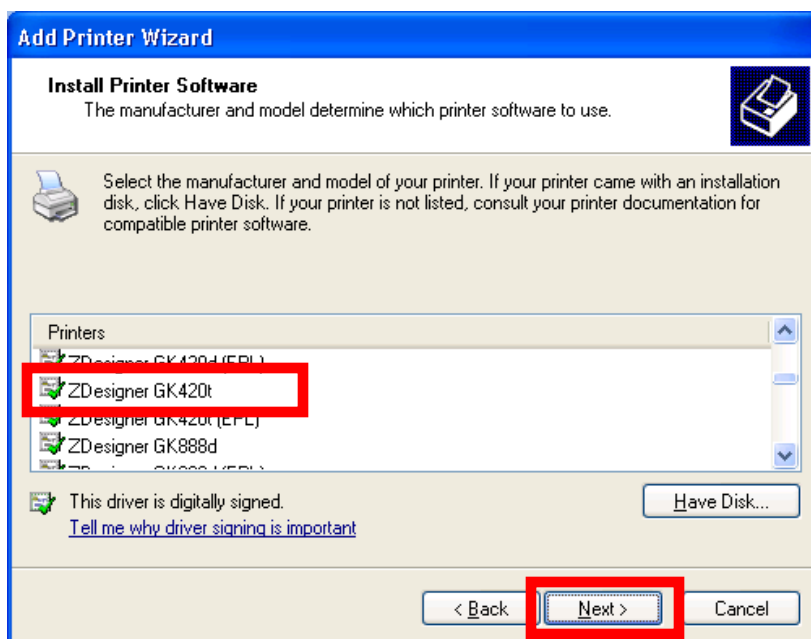




16. Use the **Browse** button to navigate to C:\ZD2663\ZBRN\ and select the Win32 folder if you are using a 32-bit operating system or the Win64 folder if you are using a 64-bit operating system.
17. Select the **OK** button.

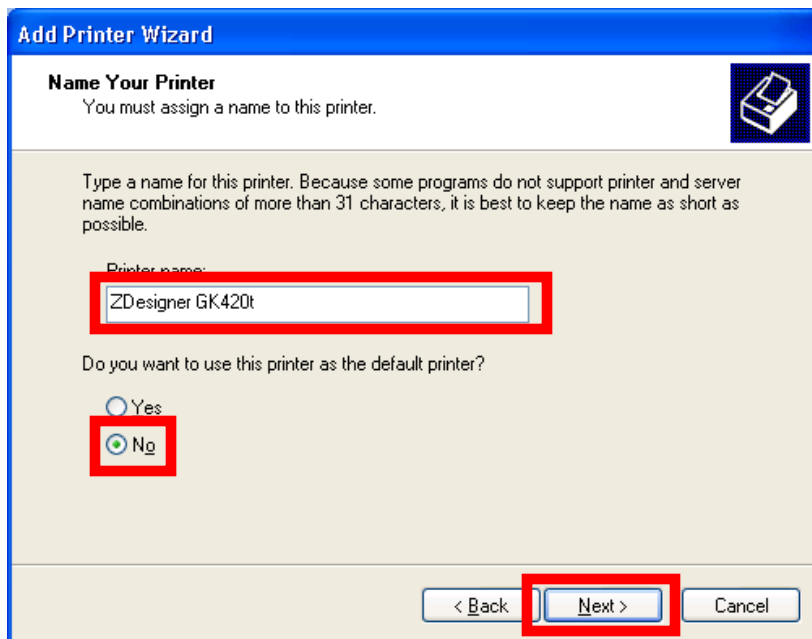


18. Select **ZDesigner GK420t** from the **Printers** list.
19. Select the **Next** button.





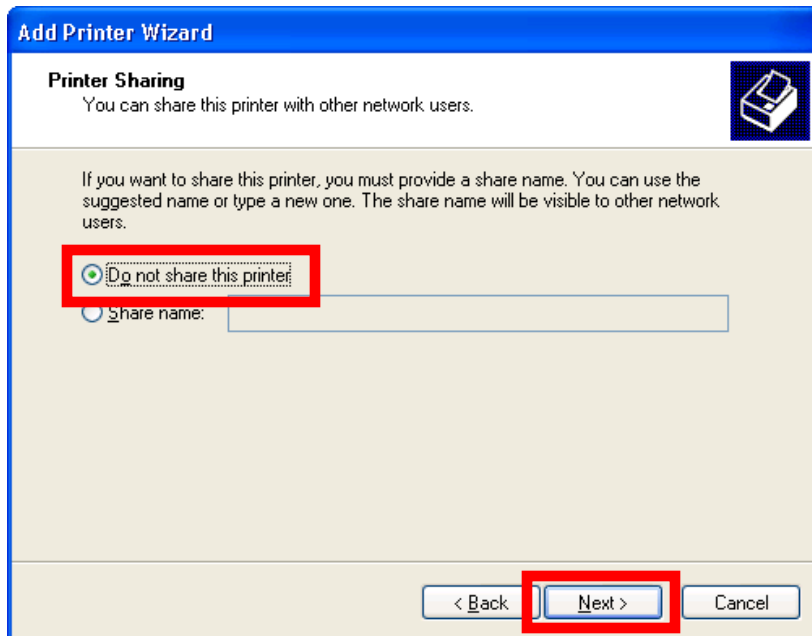
20. Enter a meaningful name in the **Printer name** field.
21. Select **No** if you do not want the label printer to be the computers default printer.
22. Select the **Next** button.





23. Verify **Do not share the printer** is selected.

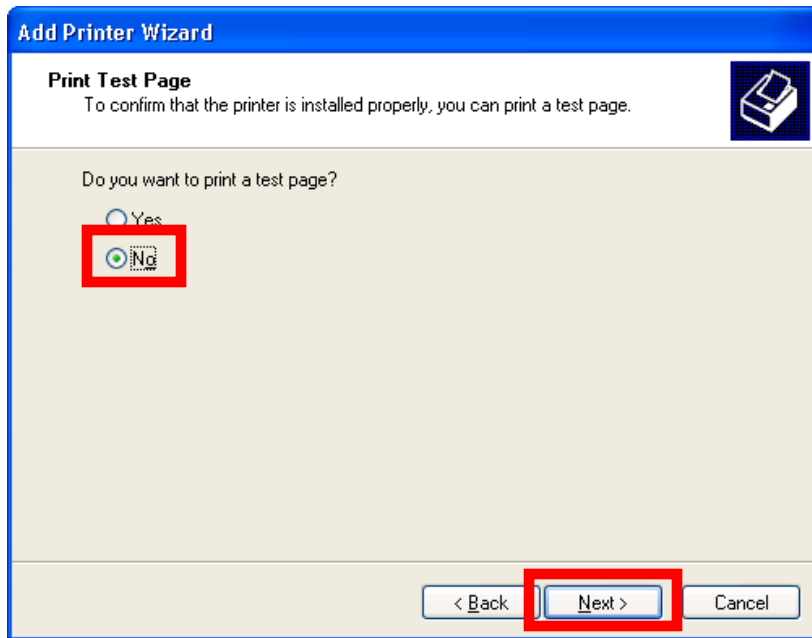
24. Select the **Next** button.





25. Verify **No** is selected so a test page will not be printed.

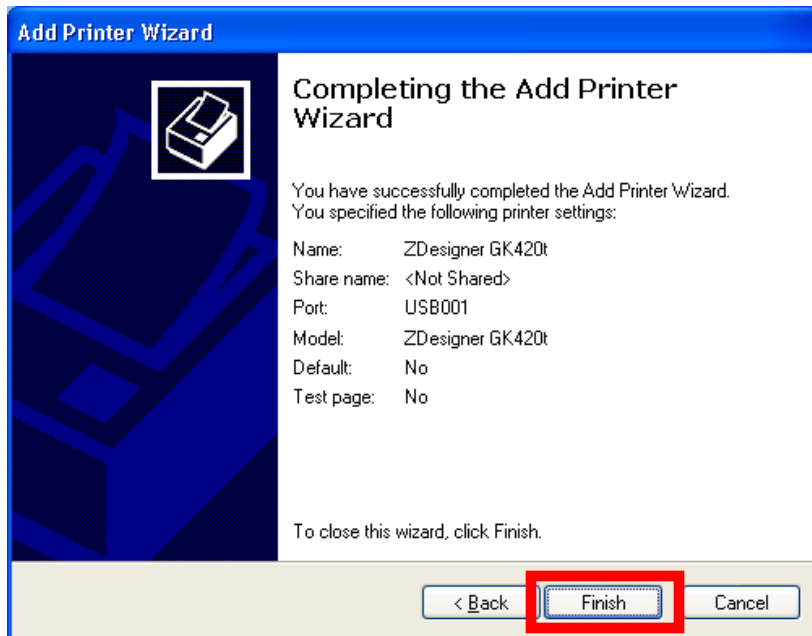
26. Select the **Next** button.





27. The **Add Printer Wizard** success screen displays.

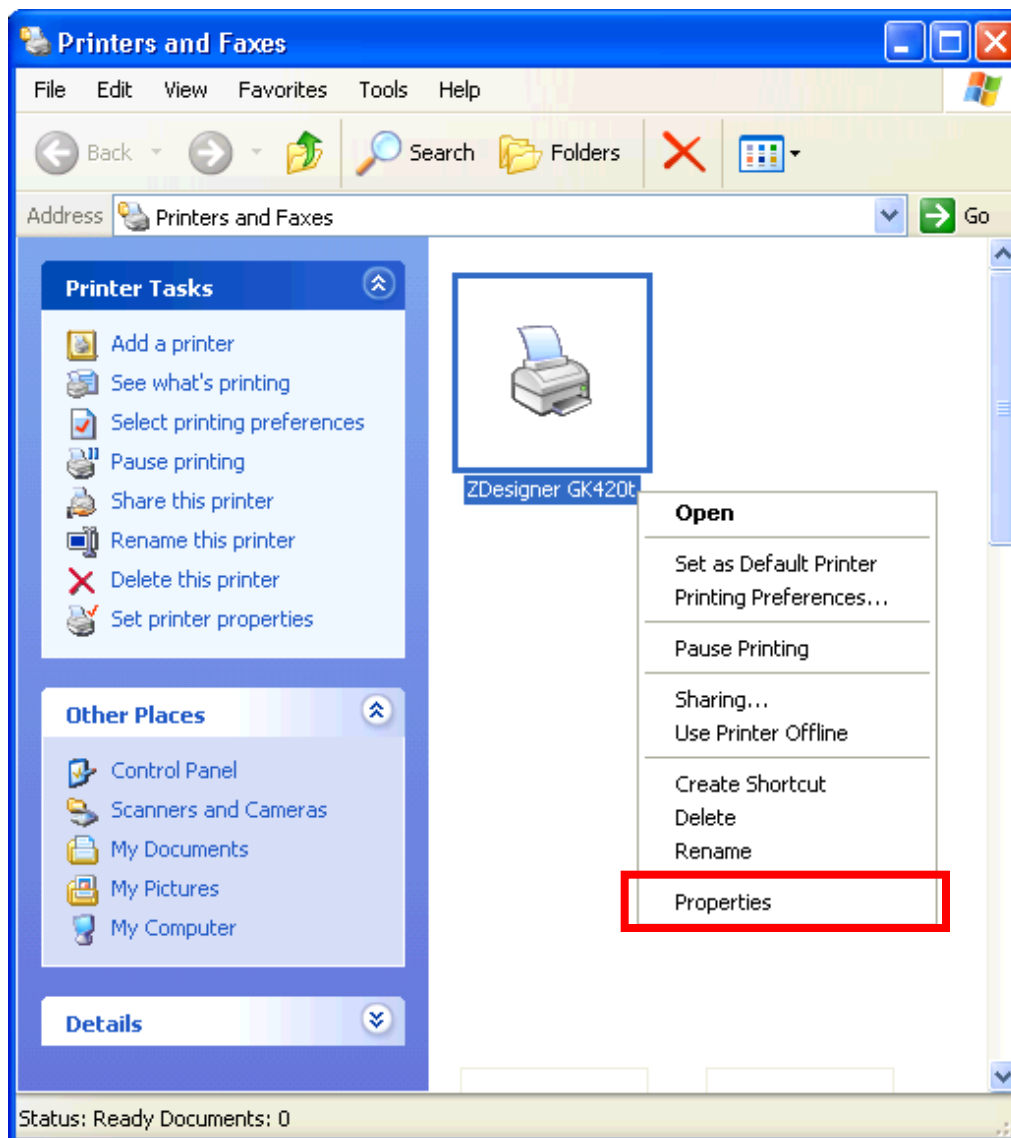
28. Select the **Finish** button and the driver installs.





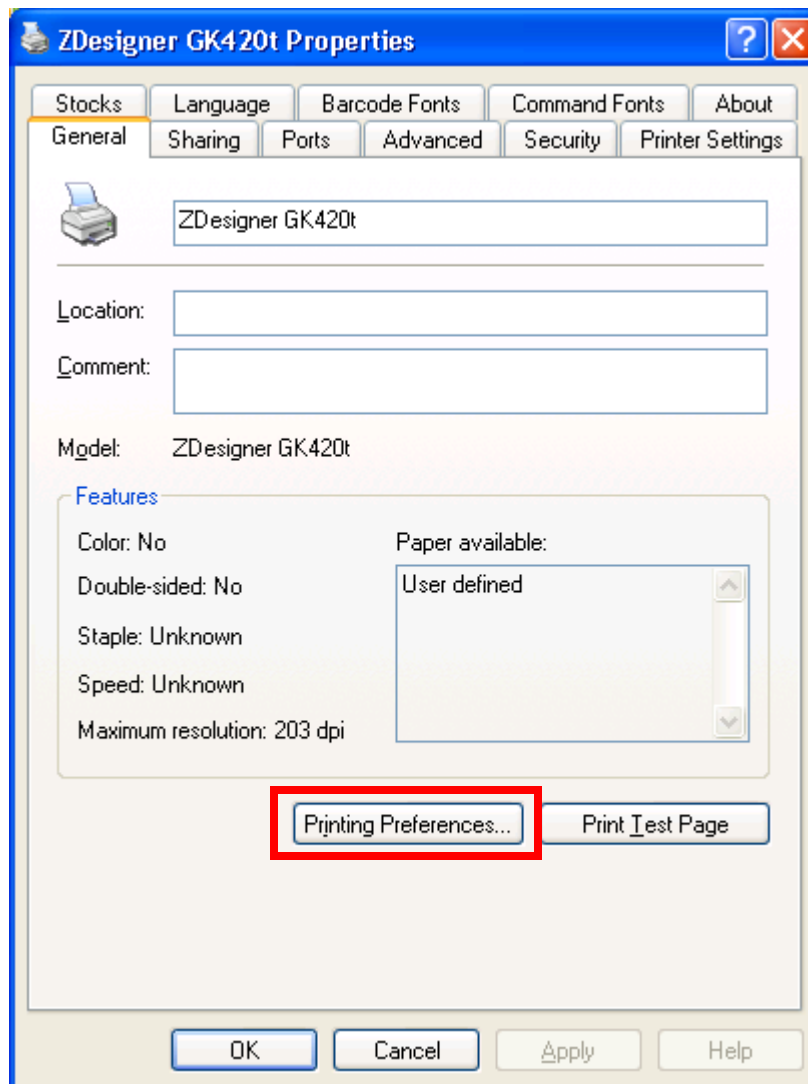
Configuring the ZDesigner Driver

1. Go to **Start > Printers and Faxes**.
2. Right-click on the printer name entered in the "Installing the ZDesigner Print Driver" section and select **Properties**.



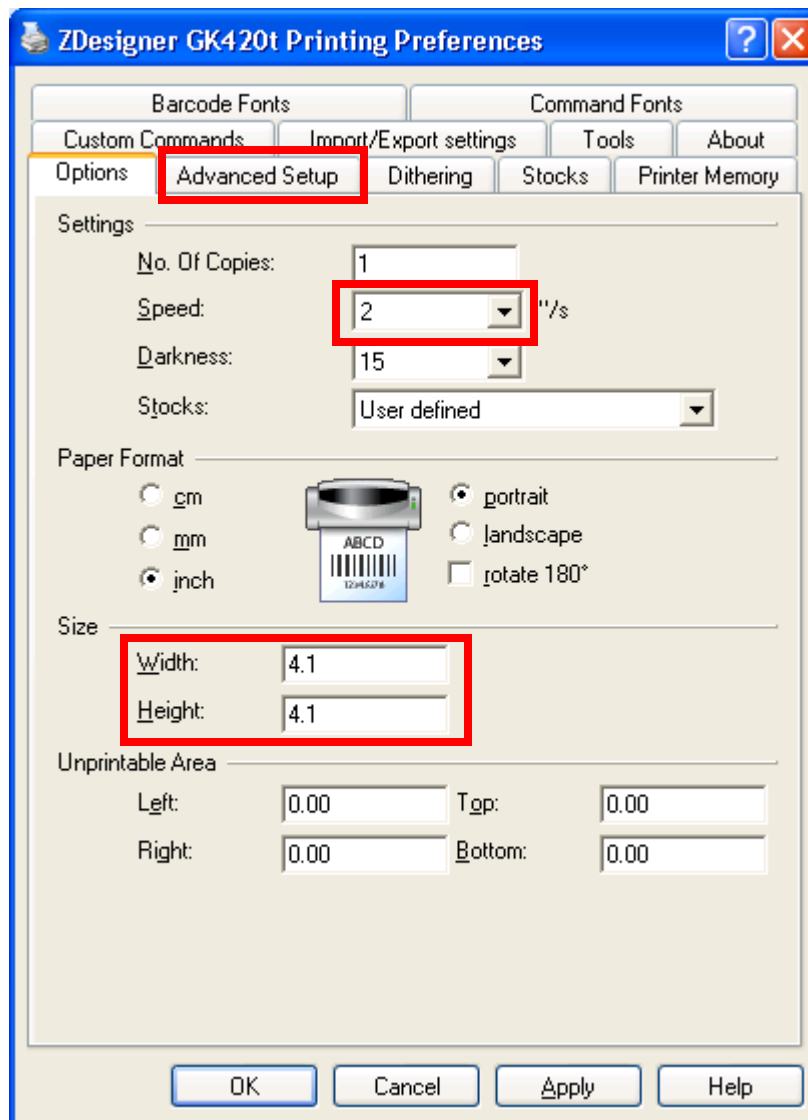


3. Select the **Preferences...** button at the bottom of the **General** tab.



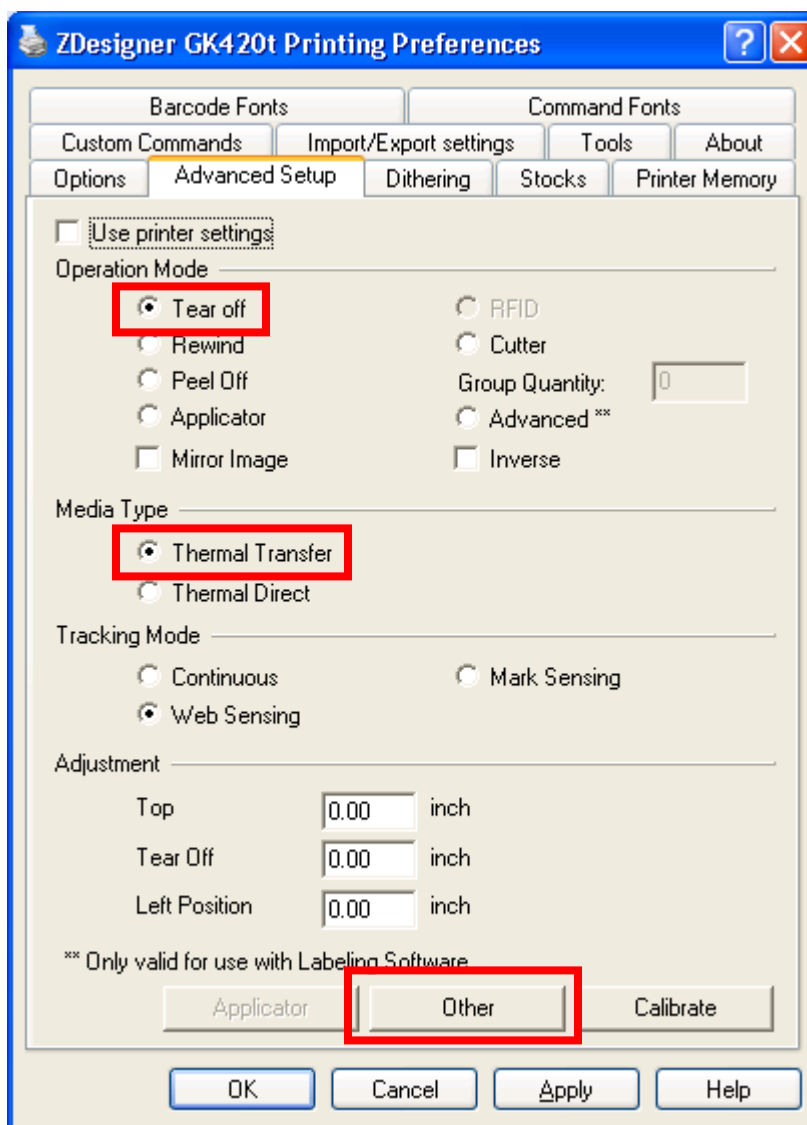


4. From the **Options** tab, under the **Settings** section, change **Speed** to 2.
5. Change Size to **Width 4.10** and **Height 4.10**.
6. Select the **Advanced Setup** tab.





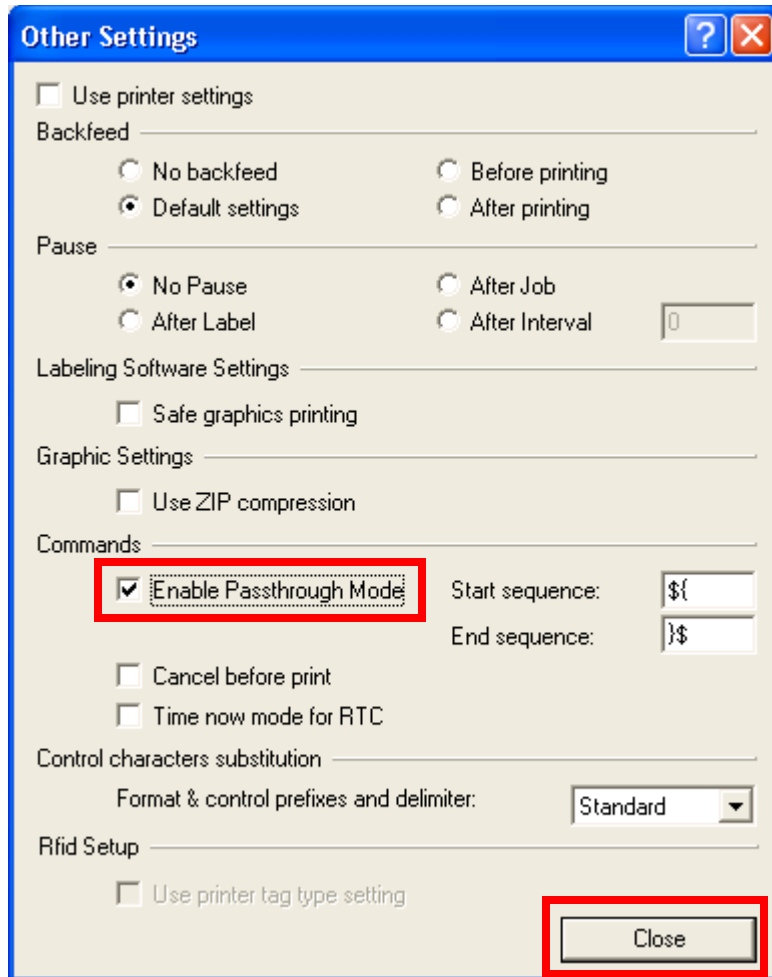
7. Select the **Tear off** radio button from the **Operation Mode** section.
8. Select the **Web Sensing** radio button from the **Tracking Mode** section.
9. Select the **Other** button.





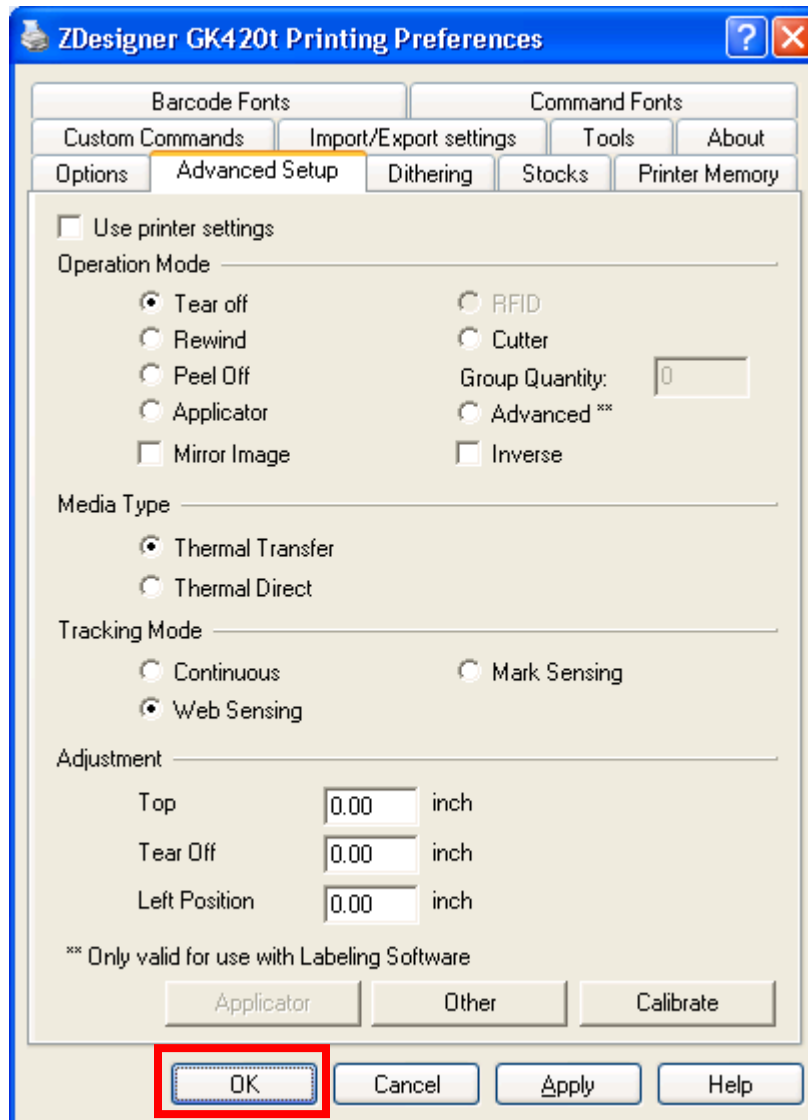
10. Select the **Enable Passthrough Mode** checkbox.

11. Select the **Close** button.



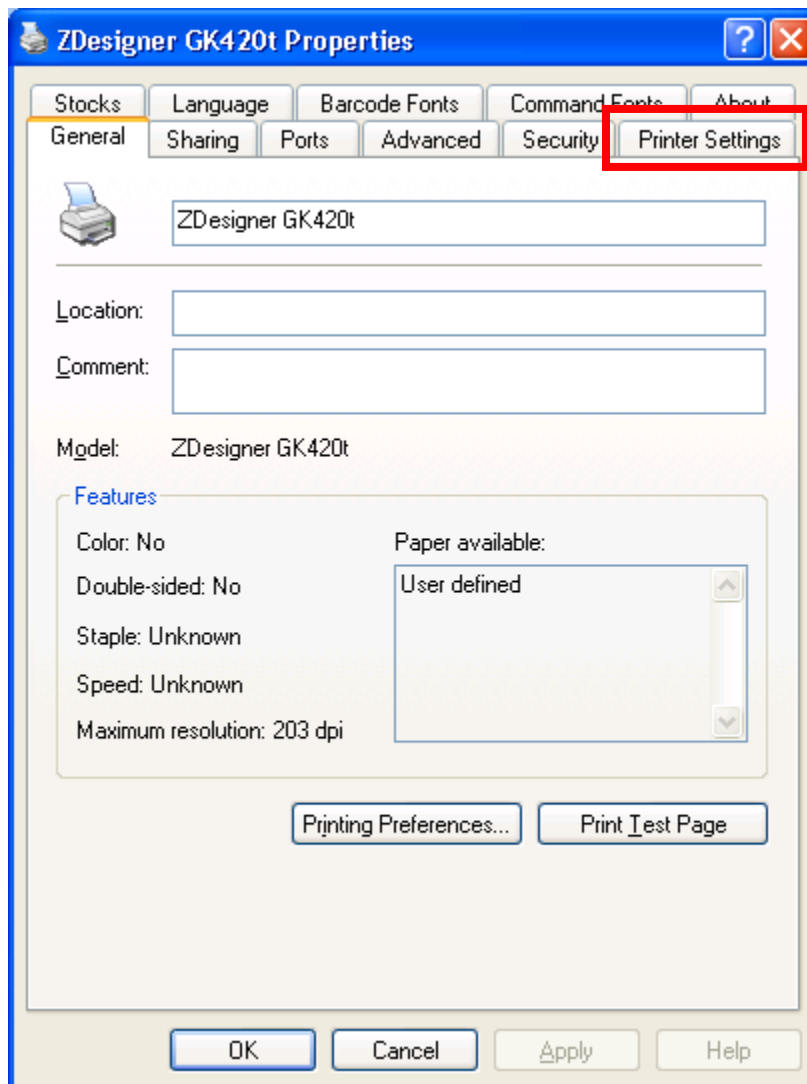


12. Select the **OK** button.





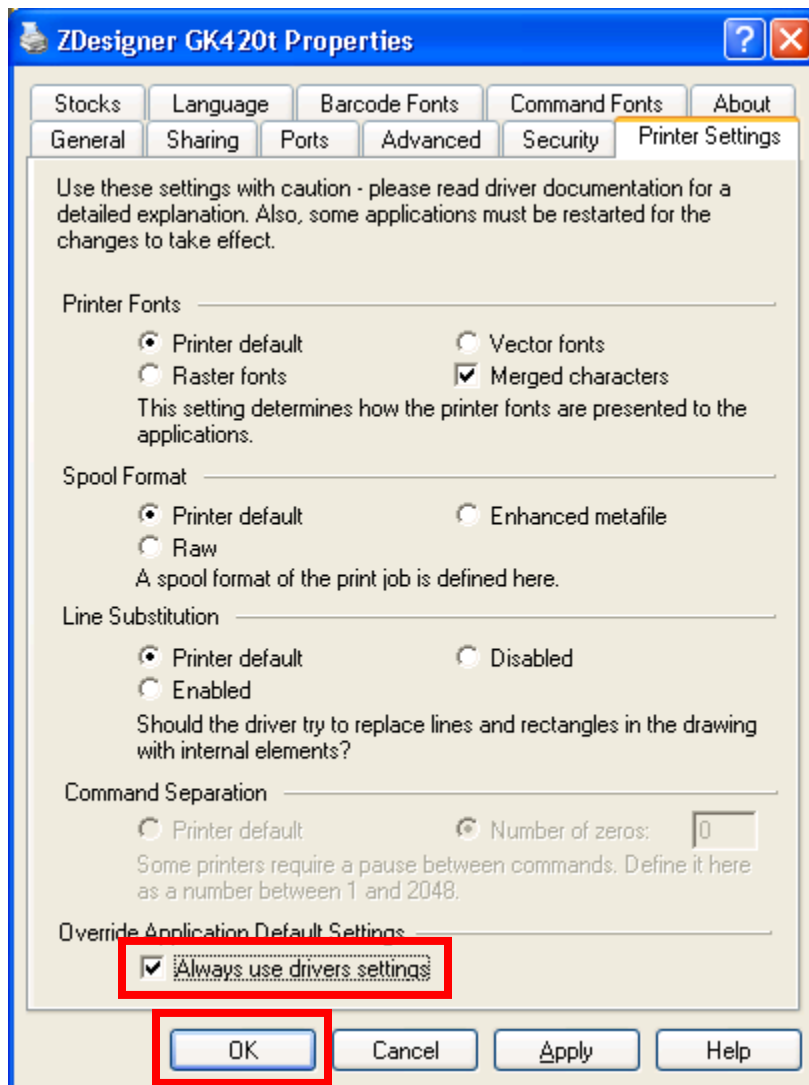
13. Select the **Printer Settings** tab.





14. Select the **Always use driver settings** checkbox.

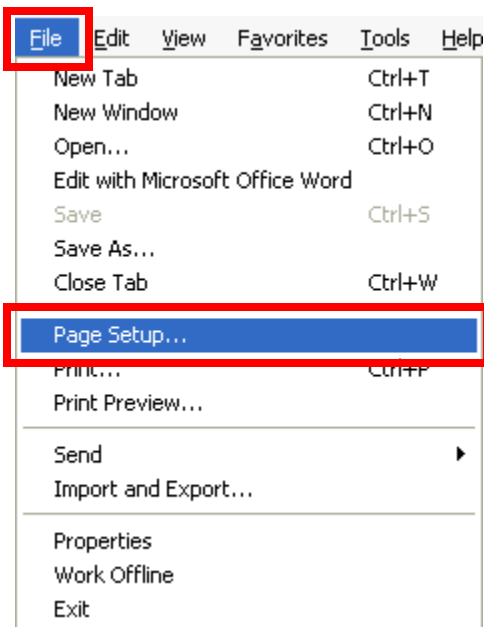
15. Select the **OK** button.





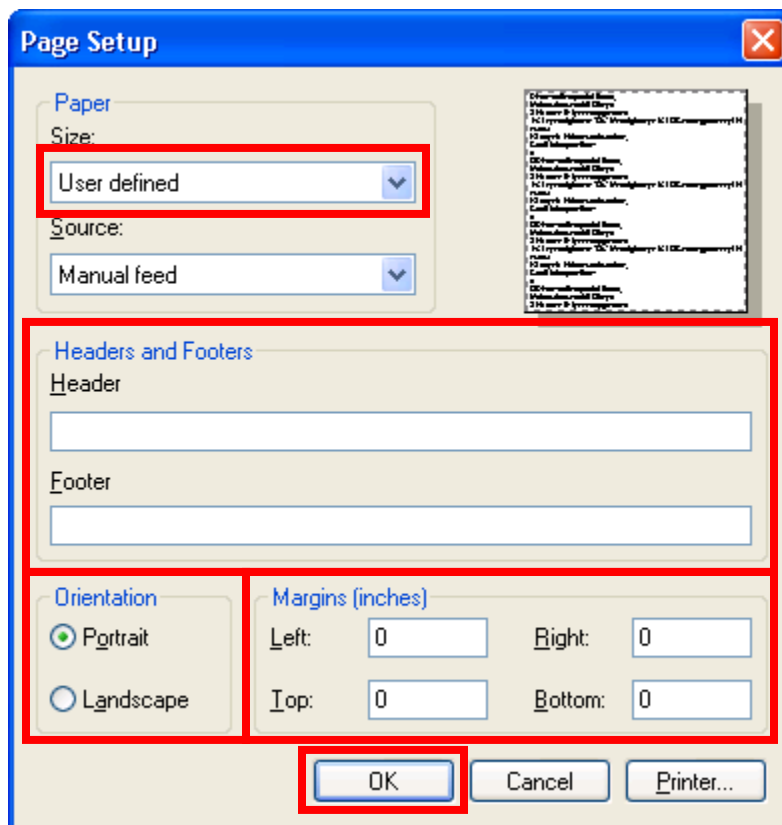
Configuring Internet Explorer

1. Login to DPAS.
2. Navigate to **AIT > Print Labels**.
3. *****IMPORTANT***** Print a label from Web DPAS.
4. Select **File** from the Menu bar. (If the Menu bar is not visible, press the **Alt** key on the keyboard)
5. Select **Page Setup**.





6. Set the **Size** to *User*.
7. Remove all text from the **Header** and **Footer** fields.
8. Verify the **Orientation** is set to *Portrait*.
9. Change the **Left**, **Right**, **Top** and **Bottom** Margin settings to *0*. Margins may adjust after the **OK** button is selected.
10. Select **OK** on the **Page Setup** dialog box.



11. You are now ready to print labels.